

Pictorial

Directory



*thirty first session
of the*

Washington State Legislature

1949



P R E F A C E

Many States throughout the Nation publish a "Blue Book" which contains pictures and biographical sketches of their elected and appointed State Officials. In response to the suggestion that a similar publication be made available in the State of Washington this Legislative Directory is offered. Because of limited funds the scope of this first Directory has been necessarily limited.

I hope that members of the 31st Legislature will find this a useful reference work and a memento to their service in this Body. I am sure the citizens of the State will also find this Directory useful in their contacts with the members of both Houses.

In presenting this volume, I wish to express my sincere appreciation and thanks to the Speaker of the House, the President Pro-Tem of the Senate, the Chief Clerk of the House and the Secretary of the Senate for their cooperation in providing information and in arranging for the pictures used in this book.

A handwritten signature in cursive script that reads "Earl Coe".

E A R L C O E
Secretary of state



WASHINGTON

STATE

CAPITOL





The Governor



ARTHUR B. LANGLIE (Republican) was born in Lanesboro, Minnesota, July 25, 1900. Moving with his family to Bremerton, Washington, in 1909, he was educated in the Bremerton public schools and the University of Washington. Working his way through the University, he was graduated from its law school in 1926.

After nine years in private law practice in Seattle, he began his career of public service in 1935 as a Seattle city councilman. Elected mayor of Seattle in 1938, he was re-elected by the largest majority in the city's history in March, 1940. He was elected governor of the State of Washington in November, 1940, and served in that post until January, 1945.

Immediately after leaving office, Governor Langlie went into active duty in the United States Navy and served in the Pacific theatre of operations. He was elected to his second term as governor in November, 1948, and inaugurated January 12, 1949. Governor Langlie was married in 1928 to Evelyn Baker, and they have two children--Arthur Sheridan and Carrie Ellen.





The Lieutenant-Governor



VICTOR A. MEYERS (Democrat) born in Little Falls, Minnesota, September 7, 1898, came to the State of Washington in his early youth and through his interest in music he became a member of several orchestras, finally achieving nation-wide renown as a leader of his own orchestra.

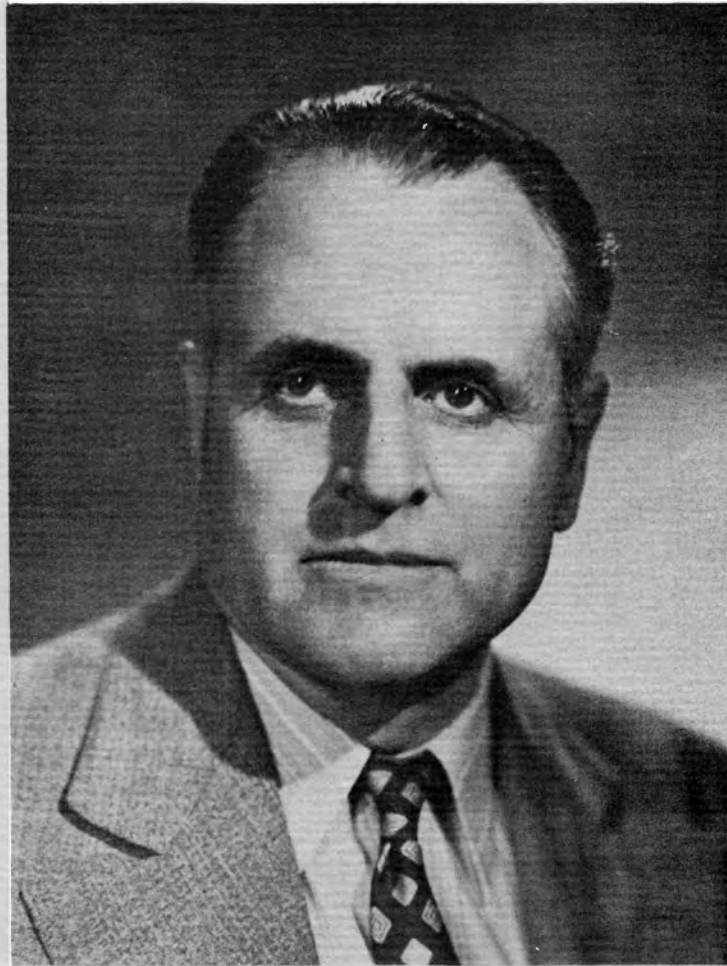
In 1930 he entered politics as a candidate for mayor of Seattle and though strictly a "dark horse" put on such a colorful campaign that he ran a strong third in the race. In 1932 he won the nomination on the Democratic ticket for Lieutenant Governor and was elected in the great Democratic landslide of that year. He was re-elected in 1936, 1940, 1944 and 1948 and is now in his 17th year of office, holding the distinction of being the oldest Lieutenant Governor in point of service in the United States.

Mr. Meyers is a member of the Elks, Eagles, Knights of Columbus, Young Men's Business Club, Seattle Chamber of Commerce and the 101 Club. His recreation favorites are golf, tennis and sail boating. His long years as presiding officer of the State Senate have made him a recognized expert in parliamentary procedure.





The Secretary of State



EARL COE (Democrat) was born in Minneapolis, Minnesota, on September 12, 1892 and was educated in the public schools of that city. He was married to Byrdie Miller on November 20, 1912.

Greatly impressed by the spectacular natural beauty of Washington and by the future prospects of the State, following a visit to the Alaska-Yukon Exposition in Seattle, Mr. Coe brought his bride to this State in 1913.

Mr. Coe engaged in various enterprises in the State including orchards, cold storage and shipping and lumbering. In 1938 he was elected State Representative from the 16th District, comprising Skamania, Klickitat, Benton and Franklin Counties and was elected State Senator in 1944. In 1946 he was the unsuccessful candidate for Congress in the Fourth District, following which he was named State Democratic Chairman. Following the death of Belle Reeves, Secretary of State, Mr. Coe was named to the vacancy by Governor Mon Wallgren and was elected to the post in 1948 by a majority of more than 136,000 votes.





The State Treasurer



TOM MARTIN (Democrat) was born in Hoquiam, Washington, in 1899 and was educated in the schools of Grays Harbor and Lewis County and attended the University of Washington. A charter member of the American Legion, Mr. Martin is a veteran of the first World War.

Mr. Martin first entered politics in Lewis County following a career of school teaching. He was elected County Auditor of Lewis County and was then named Deputy State Auditor by Cliff Yelle, a position which he held for many years. In 1945 he was named Director of State Parks, serving in that capacity until he resigned to run for the office of State Treasurer.

He is a member of the Masons, Scottish Rite, Shrine, Grange, Kiwanis and Boy Scouts. He has also been prominent in school affairs serving as president of the Chehalis Education Association, as a member of the Board of Regents of Centralia Junior College, and as a member of the Olympia School Board.





The State Auditor



St
Wh
St
Wh

CLIFF YELLE (Democrat) is now beginning his 5th term as State Auditor of the State of Washington. Mr. Yelle's first elective office was that of Auditor of Whitman County. He was first elected to the position of State Auditor in 1932. During the 16 years that he has held the office, the Legislature has named him examiner for nearly 100 additional state offices, departments and bureaus. Mr. Yelle's office now examines all state, county and municipal divisions of government. In addition, his office audits all state vouchers and pay rolls and issues upwards of 1,550,000 warrants annually, covering all state appropriation expenditures and keeping control ledger accounts for all elective and appointive offices, commissions, boards and departments including the State Legislature.

Mr. Yelle enjoys the distinction of being the only man from the western section of the United States who has been elected President of the National Association of State Auditors, Comptrollers and Treasurers and is at present a member of the executive committee of the National Association.





The Attorney-General



SMITH TROY (Democrat) was born in Olympia, Washington, where he received his public school and high school education. He is a graduate of the University of Washington Law School, where he was active in varsity athletics and was president of the student body. Admitted to the Bar in 1930, he was deputy prosecuting attorney of Thurston County from 1931 to 1934 and prosecutor from 1934 to 1940.

He was appointed Attorney General by Governor Clarence D. Martin in June, 1940. He was re-elected in 1944 in absentia while serving overseas as Judge Advocate of the 30th Infantry Division, First Army and was again re-elected in 1948. He is a member of the Washington State and American Bar Associations and of the executive committee for the Western Division, National Association of Attorneys General.

Smith Troy comes from a prominent Democratic background, his father, the late P. M. Troy, a well-known Olympia lawyer, having been a Democratic Party leader from pioneer days and his uncle, John Troy, having been governor of Alaska. Mr. Troy was the first president of the Thurston County Democratic Club in 1932 and was the keynote speaker at the 1942 Democratic State Convention. He is married and has one daughter, Stephanie.





The Superintendent of Public Instruction



MRS. PEARL WANAMAKER (Non Partisan) has established a distinguished record in the public life of the State of Washington. She was first elected a member of the House of Representatives in 1928 and served in the sessions of 1929, 1933, 1935 and the special session of 1934. She was elected to the State Senate in 1936 serving in the legislative sessions of 1937 and 1939. In 1940 she was elected Superintendent of Public Instruction and has served in that capacity ever since.

Mrs. Wanamaker was a member of the post-war Educational Mission to Japan to study the educational system. She is a member of the United States Commission for UNESCO and was advisor to the United States delegation to UNESCO at its first conference held in Paris in 1946. She is a member of the Advisory Committee of the Legislative Commission of the National Education Association, President of the State Board of Education and Chairman of the State Board of Vocational Education.





The Commissioner of Public Lands



JACK TAYLOR (Democrat) was born in Brainerd, Minnesota, June 17, 1906. He moved with his family to Seattle, Washington, and was educated in the Seattle schools.

Operating a successful grocery business, he was for eight years elected President of the Price-Rite Independent Grocers in this State. In 1934 he entered public service and by overwhelming vote was twice elected as County Commissioner of King County and served as chairman of the Board of County Commissioners.

He was elected Commissioner of Public Lands in November, 1940 and served for four years, after which time he was appointed director of the newly created Pollution Control Commission for a four year term. He was elected to his second term as Commissioner of Public Lands in November, 1948 and took office January 12, 1949. Commissioner Taylor is married and has one child.





The Insurance Commissioner



WILLIAM A. SULLIVAN (Democrat) was born in Ireland, migrating to the United States. He first secured the post of inspector in San Francisco for the pioneer firm of Pope and Talbot and subsequently engaged in the insurance and real estate business. In 1917 he entered active war time service in the United States Aviation Corps, serving until 1919. Upon his return to civilian life, Mr. Sullivan re-entered the insurance and real estate business as President of William A. Sullivan and Company. In 1922 he organized the Continental Mutual Savings institutions in Seattle, of which he was Secretary until 1928. In 1932 Mr. Sullivan was elected to the office of State Insurance Commissioner and was re-elected in 1936, 1940, 1944 and 1948. Mr. Sullivan was accorded nation-wide recognition in 1936 through his election as National President of the Insurance Commissioners of the United States.





The Supreme Court



JUSTICES OF THE STATE SUPREME COURT (left to right) Matthew W. Hill, Joseph A. Mallery, John S. Robinson, Walter B. Beals, Chief Justice C. G. Jeffers, William J. Steinert, George B. Simpson, E. W. Schwellenbach and Thomas E. Grady. This picture was taken as the Supreme Court was sitting en banc immediately following an appeal. The Justices are elected to six-year terms on a non-partisan ticket. The Supreme Court Room and offices for the Justices are located in the Temple of Justice immediately across from the Legislative Building.





*The Senate
of the
State of Washington*





SENATE
Members of the Senate, Regular Session, 1949

NAME	P. O. ADDRESS	COUNTIES REPRESENTED	Dist. No.	PARTY
*Binzer, Harry A.....	901 16th St., Bellingham.....	Whatcom, part.....	42	Republican
Copeland, Henry J.....	1204 Portland Ave., Walla Walla.....	Walla Walla.....	11	Republican
*Cowen, Dr. David C.....	S. 223 Coeur d'Alene, Spokane.....	Spokane, part.....	7	Democratic
*Dahl, B. J.....	303 W. Colville St., Chewelah.....	(Pend Oreille.....)	2	Republican
		(Stevens.....)		
*Davison, W. Ward.....	4214 Burke Ave., Seattle.....	King, part.....	32	Republican
Dixon, Gerald G. (Gerry)...	3726 S. Tacoma Ave., Tacoma.....	Pierce, part.....	28	Democratic
*Earlywine, Ross W.....	3415 Snohomish Ave., Everett.....	(Snohomish, part..)	38	Republican
		(Island, part.....)		
Edwards, A. E.....	Star Route, Deming.....	Whatcom, part.....	41	Democratic
*Flanagan, E. J.....	Route 1, Wapato.....	Yakima, part.....	15	Republican
French, Robert M.....	U Bar U Ranch, Okanogan.....	(Douglas.....)	1	Republican
		(Okanogan.....)		
Ganders, Stanton.....	R.F.D. No. 1, Bickleton.....	(Benton.....)	16	Democratic
		(Franklin.....)		
		(Klickitat.....)		
		(Skamania.....)		
*Grieve, R.R. (Bob).....	4127 45th Ave. S.W., Seattle.....	King, part.....	34	Democratic
Hall, Thomas O.....	Skamokawa.....	(Cowlitz.....)	18	Republican
		(Wahkiakum.....)		
*Happy, John H.....	S. 1138 Wall, Spokane.....	Spokane, part.....	6	Republican
*Harley, Clinton S.....	4802 E. 39th St., Seattle.....	King, part.....	43	Republican
Huntley, Ernest C.....	Colfax.....	Whitman.....	9	Republican
Hutchinson, Ray J.....	Lake Stevens.....	(Snohomish, part.)	39	Democratic
		(Island, part.....)		
*Jackson, H.N. (Barney).....	3823 S. L St., Tacoma.....	Pierce, part.....	29	Democratic
Jones, Wilder R.....	Sunset Point, Rt. 2, Wenatchee.....	Chelan.....	12	Republican
Keefe, James.....	412 W. Glass, Spokane.....	Spokane, part.....	3	Democratic
*Kimball, Harold G.....	5410 Ballard Ave., Seattle.....	King, part.....	44	Republican
Lee, Virgil R.....	917 Market St., Chehalis.....	Lewis.....	20	Republican
Lindsay, Roderick A.....	1230 E. 20th, Spokane.....	Spokane, part.....	4	Democratic
Lindstrom, Carl R.....	726 St. Helens St., Tacoma.....	Pierce, part.....	27	Democratic
*McCutcheon, John T.....	Steilacoom.....	Pierce, part.....	26	Republican
*McDonald, Charles J.....	603 Marion St., Seattle.....	King, part.....	35	Republican
McMullen, Dale.....	211 Central Bldg., Vancouver.....	Clark.....	17	Republican
Miller, Don.....	703 E. Wabash, Spokane.....	Spokane, part.....	5	Democratic
Morgan, Leslie V.....	831 S. 42nd Ave., Yakima.....	Yakima, part.....	14	Republican
*Ostrander, Frank T.....	1143 N. 76th St., Seattle.....	King, part.....	45	Republican
		(Grays Harbor,.....)		
*Parker, Lester T.....	1007 Alden Road, Aberdeen.....	(except 17.....)	21	Republican
		(precincts.....)		
		(Clallam.....)		
Pearson, Francis.....	215 W. 6th St., Port Angeles.....	Jefferson.....	24	Democratic
		(Mason.....)	8	Republican
		(Adams.....)		
*Robertson, J. H.....	Creston.....	(Ferry.....)	8	Republican
		(Lincoln.....)		
Rogers, Jack H.....	1907 5th St., Bremerton.....	Kitsap.....	23	Democratic
*Rosellini, Albert D.....	1111 Smith Tower, Seattle.....	King, part.....	33	Democratic
		(Asotin.....)	10	Democratic
		(Columbia.....)		
		(Garfield.....)		
Roup, Howard.....	Asotin.....	Grant.....	10	Democratic
*Rutter, R. L., Jr.....	Ellensburg.....	(Kittitas.....)	13	Republican
		(San Juan.....)		
Sapp, Jess V.....	Route 1, Sedro Woolley.....	(Skagit.....)	40	Democratic
Schroeder, Ted F.....	728 N. Meridian, Puyallup.....	Pierce, part.....	25	Democratic
Sears, Carlton I.....	2412 S. Columbia, Olympia.....	Thurston.....	22	Republican
*Shank, Corwin Philip.....	Rt. 1, Box 344, Kirkland.....	King, part.....	46	Republican
		(Pacific, and.....)	19	Democratic
		(part.....)		
Tisdale, Clyde V.....	Rt. 1, Box 234, Raymond.....	Grays Harbor.....	19	Democratic
*Todd, John N.....	R.R. Box 747, Mercer Island.....	King, part.....	31	Democratic
*Westberg, Alfred J.....	3802 E. John St., Seattle.....	King, part.....	37	Republican
*Witten, Dayton A.....	902 First N.E., Auburn.....	King, part.....	30	Republican
*Zednick, Victor.....	1611 6th Ave. W., Seattle.....	King, part.....	36	Republican

*Holdover





SENATE STANDING COMMITTEES — 1949

AERONAUTICS AND AIRPORTS (5)

Witten, Chairman; Hutchinson, Keefe, McDonald, Robertson.

AGRICULTURE AND LIVESTOCK (9)

Roup, Chairman; Dahl, Edwards, French, Ganders, Hall, Lindstrom, Morgan, Rutter.

APPROPRIATIONS (13)

Harley, Chairman; Copeland, Vice-Chairman; Binzer, Cowen, Davison, Flanagan, Happy, Huntley, Rogers, Rosellini, Sapp, Schroeder, Zednick.

BANKS AND FINANCIAL INSTITUTIONS (6)

Sears, Chairman; Huntley, Kimball, Lindsay, Roup, Zednick.

CITIES, TOWNS AND COUNTIES (7)

Kimball, Chairman; Ganders, Keefe, Morgan, Parker, Westberg, Witten.

CLAIMS AND AUDITING (3)

Huntley, Chairman; Binzer, Rosellini.

COMMERCE, MANUFACTURING AND TRANSPORTATION (7)

McCutcheon, Chairman; Davison, Dixon, Harley, Keefe, Sears, Shank.

CONSTITUTION, ELECTIONS AND APPORTIONMENT (7)

Zednick, Chairman; Grieve, Happy, Harley, Robertson, Roup, Sears.

EDUCATION (9)

Morgan, Chairman; Dixon, Earlywine, Hall, Hutchinson, Robertson, Rogers, Roup, Zednick.

ENGROSSED AND ENROLLED BILLS (4)

McDonald, Chairman; Hall, Hutchinson, Tisdale.

FISHERIES (7)

Jackson, Chairman; Earlywine, Edwards, Kimball, Parker, Rogers, Shank.

GAME AND GAME FISH (7)

Flanagan, Chairman; French, Harley, Jackson, Lindsay, Lindstrom, McMullen.

HIGHER EDUCATION AND LIBRARIES (9)

Davison, Chairman; Cowen, Earlywine, Edwards, Ganders, Grieve, McCutcheon, McDonald, Westberg.

INDUSTRIAL INSURANCE (7)

Ostrander, Chairman; Binzer, Davison, Lindstrom, McMullen, Miller, Tisdale.

INSURANCE (8)

Happy, Chairman; Lee, Lindsay, Lindstrom, Ostrander, Sapp, Shank, Westberg.

JUDICIARY (11)

Shank, Chairman; Westberg, Vice-Chairman; Edwards, Kimball, McCutcheon, McMullen, Miller, Parker, Rosellini, Schroeder, Zednick.

LABOR (8)

Jones, Chairman; Dixon, Flanagan, Hall, Happy, Ostrander, Pearson, Todd.

LIQUOR CONTROL (9)

Westberg, Chairman; Grieve, Harley, Jackson, Lee, Ostrander, Parker, Rosellini, Witten.

MEDICINE AND DENTISTRY (7)

Earlywine, Chairman; Copeland, Cowen, Grieve, McDonald, Pearson, Sears.

MILITARY, NAVAL AND VETERANS' AFFAIRS (7)

McMullen, Chairman; Dahl, Hutchinson, Happy, Kimball, Schroeder, Tisdale.

MINES AND MINING (5)

Sapp, Chairman; Dahl, French, Miller, Todd.

PARKS AND PUBLIC BUILDINGS (8)

French, Chairman; Dixon, Keefe, Lindsay, Morgan, Robertson, Rutter, Witten.

PUBLIC MORALS (7)

Dixon, Chairman; French, Hall, Jackson, Lindsay, Ostrander, Shank.

PUBLIC UTILITIES (7)

Copeland, Chairman; Cowen, Flanagan, Happy, Jones, McCutcheon, Roup.

RECLAMATION AND IRRIGATION (9)

Rutter, Chairman; Todd, Vice-Chairman; Ganders, Jones, Miller, Morgan, Pearson, Sears, Witten.

REVENUE AND TAXATION (9)

Lee, Chairman; Dixon, Earlywine, Flanagan, Ganders, Jones, McMullen, Pearson, Rogers.

ROADS AND BRIDGES (15)

Robertson, Chairman; French, Vice-Chairman; Binzer, Huntley, Jackson, Jones, Lee, Morgan, Pearson, Rogers, Sapp, Tisdale, Todd, Westberg, Witten.

RULES AND JOINT RULES (14)

Parker, Binzer, Copeland, Cowen, Dahl, Davison, Edwards, Flanagan, Huntley, Lee, Rogers, Rosellini, Schroeder, Zednick.

SOCIAL SECURITY AND

STATE INSTITUTIONS (17)

Hall, Chairman; Dahl, Vice-Chairman; Copeland, Davison, Earlywine, Grieve, Hutchinson, Keefe, Lindstrom, McDonald, McMullen, Miller, Ostrander, Rutter, Sapp, Sears, Todd.

STATE RESOURCES, FORESTRY AND LANDS (7)

Dahl, Chairman; Binzer, Jones, McCutcheon, Parker, Schroeder, Tisdale.





OFFICERS OF THE SENATE



THE PRESIDENT PRO-TEM
LESTER T. PARKER



THE SERGEANT AT ARMS
GEORGE OLSEN



THE SECRETARY
HERBERT G. SIELER



MEMBERS OF THE STATE SENATE



BINZER, HARRY A. (Republican) Senator from the 42nd District of Whatcom County, was born in Wisconsin and is 51 years of age. He was first elected to the Senate in 1942 and served as Chairman of the Committee on The State Library in the 1943 Session. He was elected again in 1946 and served as Chairman of the Committee on Industrial Insurance in the 1947 Session and as Chairman of Claims and Auditing in the 1949 Session. Senator Binzer is a corporation Secretary by profession and resides at 901 16th Street in Bellingham. His Olympia address is the Olympian Hotel, phone 4451.

COMMITTEE ASSIGNMENTS--*Claims and Auditing, CHAIRMAN; Appropriations; Industrial Insurance; Roads and Bridges; Rules and Joint Rules; State Resources, Forestry and Lands.*

CLARK, ASA V. (Republican) Senator from the 9th District of Whitman County, was born in Whitman County in 1889 and is 59 years of age. He was first elected to the House in 1940 and has served five regular terms and one special session. In 1941 he was Chairman of Educational Institutions and Chairman of Appropriations in 1947. Mr. Clark was appointed to the Senate to fill the vacancy left by the appointment of Ernest C. Huntley to the Tax Commission. He attended Washington State College and was a member of the State Guard. He is married, a Protestant, and has three children, Barbara Jean, Asa V. Jr. and D. Girard. He resides at 305 Oak St., Pullman; local address Governor Hotel, phone 6622.

COMMITTEE ASSIGNMENTS--*Appropriations; Banks and Banking; Claims and Auditing; Higher Education and Libraries; Roads and Bridges.*



COPELAND, HENRY J. (Republican) Senator from the 11th District of Walla Walla County, was born in Walla Walla in 1885 and is 64 years of age. He was first elected in 1934 and has served seven terms and one special session in the Senate and one term in the House. In 1941 he was Chairman of Appropriations and in 1947 was Chairman of Public Utilities and Vice Chairman of Appropriations. He was County Commissioner from 1928 to 1934. He attended the Walla Walla Public Schools and Walla Walla College. A farmer, he is a member of Odd Fellows, Elks and Masons. He is a Presbyterian, is married and resides at 1204 Portland Ave., Walla Walla. His local address is the Governor Hotel, phone 6622.

COMMITTEE ASSIGNMENTS--*Public Utilities, CHAIRMAN; Appropriations; Medicine & Dentistry; Rules & Joint Rules; Social Security & State Institutions.*

COWEN, DAVID C. DR. (Democrat) Senator from the 7th District of Spokane County, was born at Portland, Oregon, in 1901 and is 48 years of age. He was first elected to the House in 1934 and has served four terms in both House and Senate. In 1937 he was Chairman of Appropriations in the House; in 1943 Chairman of Public Buildings and Grounds and in 1947 of Public Morals in the Senate. He is a graduate of the University of Oregon Dental College. He served in the S.O.T.C. in 1917 and is a Mason, Shriner, Elk and Moose. He resides at 223 S. Cour D'Alene, Spokane and his local address is the Olympian Hotel, phone 4451.

COMMITTEE ASSIGNMENTS--*Appropriations; Higher Education and Libraries; Medicine & Dentistry; Public Utilities; Rules & Joint Rules.*



MEMBERS OF THE STATE SENATE



DAHL, BJARNE J. (Republican) Senator from the 2nd District of Stevens and Pend Oreille Counties, was born in Norway in 1898 and is 50 years of age. First elected to the Senate in 1942, he is serving his second term. During the sessions of 1943, 1945 and 1947 he was Chairman of Mines and Mining. Now a newspaper publisher, he has been a city councilman and served overseas in World War I. He attended high school and college and is a member of Sigma Delta Chi, American Legion, Kiwanis and Chewelah Chamber of Commerce. A member of the Congregational Church, he is married and has two children, Gregory 17 and Dahleen 12. He resides at 303 Colville Ave., Chewelah and his local address is Hotel Governor, phone 6622.

COMMITTEE ASSIGNMENTS--*State Resources, Forestry and Lands, CHAIRMAN; Agriculture & Livestock; Rules & Joint Rules; Military, Naval & Veterans' Affairs; Social Security & State Institutions*

DAVISON, WARD W. (Republican) Senator from the 32nd District of King County, was born at Garden City, Kansas, in 1904 and is 44 years of age. He was first elected in 1942 and has served four regular and one special session. In 1943 he was Chairman of Industrial Insurance and in 1947 he was Chairman of Higher Education and Libraries. He is a University of Washington graduate in Business Administration and is a member of the Sigma Phi Epsilon and Masons. He is owner and operator of Davison's retail electrical appliances and radios. A member of the University Congregational Church, he is married and has two children, Peggy Lou 16 and Ward 14. He resides at 4214 Burke Avenue, Seattle and his local address is 1711 S. Water St., phone 8325

COMMITTEE ASSIGNMENTS--*Higher Education and Libraries, CHAIRMAN; Appropriations; Commerce, Manufacturing and Transportation; Industrial Insurance; Social Security and State Institutions.*



DIXON, GERALD G. "GERRY" (Democrat) Senator from the 28th District of Pierce County, was born in London, England, in 1884 and is 64 years of age. First elected to the House in 1934, where he served three sessions, he is now serving his fourth regular session in the Senate. He has been chairman of the Labor, Education and Public Morals committees. He was Democratic State Committeeman from 1941 to 1944. A locomotive Engineer, he has had one year of college and served with the Selective Service System during World War II. He is a member of the Christian Church and the Fraternal Order of Eagles. Married, he has three children Helen, Jessie and Geraldine. He resides at 3726 S. Tacoma Ave., and his local address is Pacific Building, Apt. 209, phone 23511.

COMMITTEE ASSIGNMENTS--*Public Morals, CHAIRMAN; Commerce, Manufacturing and Transportation; Education; Labor; Parks and Public Buildings; Revenue and Taxation.*

EARLYWINE, ROSS W. (Republican) Senator from the 38th District of Snohomish County, was born in Iowa and is 62 years of age. He was first elected to the Senate in 1946 and served as Chairman of the Committee on Medicine and Dentistry in the 1947 Session and again in the 1949 Session. Senator Earlywine is a dentist by profession and resides at 3415 Snohomish Avenue in Everett. His local address is 115 West 20th.

COMMITTEE ASSIGNMENTS--*Medicine and Dentistry, CHAIRMAN; Education; Fisheries; Higher Education and Libraries; Revenue and Taxation; Social Security and State Institutions.*



MEMBERS OF THE STATE SENATE



EDWARDS, A. E. (Democrat) Senator from the 41st District of Whatcom County, was born in Canada, in 1879, and is 69 years of age. He was first elected in 1932 and has served in seven sessions of the Senate and three in the House. He was Chairman of House Appropriations in 1935 and Chairman of Senate Appropriations in 1945. He was Chairman of Banks and Banking in 1937 and 1939 and of Fisheries in 1941. He has been Roads Supervisor for Whatcom County for nine years and is a farmer. He is a member of the Masons, Grange, Lions, Eagles, Elks, Odd Fellows and Knights of Pythias. A member of the Episcopalian Church, he has one son, A. E., Jr. He resides at Deming and his local address is the Olympian Hotel, phone 4451.

COMMITTEE ASSIGNMENTS--*Agriculture & Livestock; Fisheries; Higher Education and Libraries; Judiciary; Rules & Joint Rules.*

FLANAGAN, E. J. (Republican) Senator from the 15th District of Yakima County, was born in Wisconsin and is 66 years of age. First elected in 1942, he was Vice-Chairman of the Committee on Agriculture in the 1943 Session. He served in the Special Session of 1944 and the 1945 Regular Session. Re-elected in 1946, he was Chairman of Game and Game Fish in the 1947 Session and again in the 1949 Session. A rancher by profession, Senator Flanagan resides on Route One, Wapato. His Olympia address is the Governor Hotel, phone 6622.

COMMITTEE ASSIGNMENT--*Game and Game Fish, CHAIRMAN; Appropriations; Labor; Public Utilities; Revenue and Taxation; Rules and Joint Rules.*



FRENCH, ROBERT M. (Republican) Senator from the 1st District of Okanogan County, was born in Okanogan in 1899 and is 49 years of age. He was first elected in 1937 and has served six regular and one special session in the House of Representatives. In 1937 he was Chairman of Horticulture, in 1941 and 1943 of Dairy and Livestock, 1947 Roads and Bridges. He is a graduate of Washington State College, receiving his B.S. Degree in Agriculture and is a stockman. He is a member of the Masons, Grange, Elks and Phi Delta Theta. Married in 1924, he has two children, Norma Lee 19 and Roberta 13. He resides at the U Bar U Ranch, Okanogan and his local address is the Governor Hotel, phone 6622.

COMMITTEE ASSIGNMENTS--*Parks and Public Buildings, CHAIRMAN; Roads and Bridges; Agriculture and Livestock; Game and Game Fish; Mines and Mining; Public Morals.*

GANDERS, STANTON H. (Democrat) Senator from the 16th District of Klickitat County, was born at Bickleton in 1912 and is 36 years of age. When Earl Coe was appointed Secretary of State in January 1948 Senator Ganders was appointed to finish out the unexpired term in the Senate. He is a University of Washington graduate and is a farmer. He served with the Army Air Force from Dec. 1941 to Oct. 1945 and is a member of the Masons, Elks, Grange, Farm Bureau, Wheat League, V.F.W. and Legion. A Presbyterian, he resides at R.F.D. #1, Bickleton and his local address is the Olympian Hotel, phone 4451.

COMMITTEE ASSIGNMENTS--*Agriculture and Livestock; Appropriations; Cities, Towns and Counties; Higher Education and Libraries; Reclamation and Irrigation.*



MEMBERS OF THE STATE SENATE



GREIVE, R. R. "BOB" (Democrat) Senator from the 34th District of King County, was born in Seattle, Washington, in 1919 and is 29 years of age. He was first elected to the Senate in 1946. He is a merchandise broker and was in the armed forces for two and a half years during World War II. He is a member of Kiwanis; American Legion, Phi Alpha Delta, the West Seattle Commercial Club, and West Seattle Sportsman Club. He is Catholic and resides at 4127 45th Ave. S.W., Seattle. His local address is the Governor Hotel, phone 6622.

COMMITTEE ASSIGNMENTS--*Commerce, Manufacturing and Transportation; Higher Education and Libraries; Judiciary; Liquor Control; Medicine and Dentistry.*

HALL, Tom (Republican) Senator from the 18th District of Wahkiakum County, was born in Martin County, Minnesota, in 1908 and is 40 years of age. He was first elected to the House in 1946 and is serving his second term. For the 1949 session he is Chairman of the Social Security and State Institutions committee. A college graduate, he is a farmer and a member of the grange. He is a Methodist and was married in 1931 and has one daughter Kathryn Marie age 11. He resides in Skamokawa and his local address is Stevenson's Deluxe Court, phone 23965

Committee Assignments--*Social Security and State Institutions, CHAIRMAN; Agri-culture and Livestock; Education; Engrossed and Enroll-ed Bills, Labor; Public Morals*



HAPPY, JOHN H. (Republican) Senator from the 6th District of Spokane County, was born at Spokane in 1895 and is 53 years of age. He was elected to the Senate in 1946 and served as Chairman of the Commerce and Manufacturing committee during the 1947 Session. A graduate of the University of Washington, he is an Insurance Agent and a member of Kiwanis and Delta Kappa Epsilon. He served in the First World War as a first lieutenant in the field artillery. Married in 1929 he has one son John Jr., and is a member of the Episcopal Church. He resides at 1138 S. Wall, Spokane and his local address is the Governor Hotel, phone 6622.

COMMITTEE ASSIGNMENTS--*Insurance, CHAIRMAN; Appropriations; Constitution, Elections and Apportionment; Labor; Military, Naval and Veterans' Affairs; Public Utilities.*

HARLEY, CLINTON S. (Republican) Senator from the 43rd District of King County, was born in Ohio in 1877 and is 71 years of age. He was first elected in 1942 and has served two terms in the House and one term in the Senate. In 1943 he was Chairman of Cities of the First Class and in 1947 was Chairman of the Senate Appropriations committee. He has been Chairman of the King County Planning Commission and Chairman of the King County Hospital System. He is President of the Evergreen Cemetery Company of Seattle. A veteran of the Spanish American War, he is a Protestant, is a Mason and Shriner. Married in 1902, he has a son, C. Frederick and two daughters, Mrs. Winston Scott and Hortense Harley. He resides at 4802 E. 39th, Seattle and his local address is 2514 S. Columbia, phone 7175.

COMMITTEE ASSIGNMENTS--*Appropriations, CHAIRMAN; Commerce, Manufacturing and Transportation; Constitution, Elections and Apportionment; Game and Game Fish; Liquor Control.*



MEMBERS OF THE STATE SENATE



HUTCHINSON, RAY J. (Democrat) Senator from the 39th District of Snohomish County, was born at Everett, Washington, in 1914 and is 34 years of age. He has attended Porterville Junior College and Washington State College. Owner of a Sporting Goods shop in Everett, he served in World War II in the Navy. He is a member of the National Guard, Elks, Eagles, V.F.W., American Legion, Lions Club, Improved Order of Redmen and the Masons. A Protestant, he is married and has three children. He resides at Lake Stevens and his local address is the Olympian Hotel, phone 4451.

COMMITTEE ASSIGNMENTS--*Aeronautics and Airports; Education; Engrossed and Enrolled Bills; Military, Naval and Veterans' Affairs; Social Security and State Institutions.*

JACKSON, H. N. "BARNEY" (Democrat) Senator from the 29th District of Pierce County, was born in St. Paul, Minn., in 1904 and is 44 years of age. He was first elected in 1937 and has served two sessions in the House and five in the Senate. He has been Senate Chairman of Fisheries for four sessions and Chairman of the Legislative Interim Fisheries Committee. He attended high school and Tacoma City College. He served in the U. S. Navy in World War II, and is a member of the Masons, Shrine, Grotto, Royal Arch, Elks, Eagles, Scandinavian Fraternity of America, Sons of Norway and others. Married in 1926, he has three children, Phyllis 21, Jeanette 19 and Jim 17 years of age. He is a Lutheran and resides at 3823 S. L St., Tacoma. His local address is the Olympian Hotel, phone 4451.

COMMITTEE ASSIGNMENTS--*Fisheries, CHAIRMAN; Game and Game Fish; Liquor Control; Public Morals; Roads and Bridges.*



JONES, WILDER R. (Republican) Senator from the 12th District of Chelan County, was born at Clear Lake, Wisconsin, in 1884 and is 64 years of age. He is Chairman of the Labor committee. He has served as State Chairman of the Republican Central Committee and as City Treasurer of Lynden, Washington. He is semi-retired from Life Insurance and Merchandising. A former National Guardsman, he is a member of the Elks and Rotary. Married in 1915, he has three children, Calvin 32, Marilyn 22 and Wilder Jr., 19. He is a Protestant and resides at R.F.D. #2 Sunset Point, Wenatchee. His local address is the Olympian Hotel, phone 4451.

COMMITTEE ASSIGNMENTS--*Labor, CHAIRMAN; Public Utilities; Reclamation and Irrigation; Revenue and Taxation; Roads & Bridges; State Resources, Forestry and Lands.*



KEEFE, JAMES (Democrat) Senator from the 3rd District of Spokane County, was born in New York City, in 1908 and is 40 years of age. A graduate of Gonzaga High School, he is now a theatre manager. He was married in 1933 and has two children, Joey age 7 and Danny age 4. He is a member of the Catholic Church and resides at 412 W. Glass Avenue, Spokane. His local address is 2116 Capitol Way, phone 5898.

COMMITTEE ASSIGNMENTS--*Aeronautics and Airports; Cities, Towns and Counties; Constitution, Elections and Apportionment; Parks and Public Buildings; Social Security and State Institutions.*



MEMBERS OF THE STATE SENATE



KIMBALL, HAROLD G. (Republican) Senator from the 44th District of King County, was born in Minnesota and is 53 years of age. He was first elected to the Senate in 1946 and served as Chairman of the Committee on Aeronautics and Airports in the 1947 Session and as Chairman of Cities, Towns and Counties in the 1949 Session. He is publisher of the Ballard News in Seattle and resides at 5410 Ballard Avenue in that city. His Olympia address is the Governor Hotel, phone 6622.

COMMITTEE ASSIGNMENTS--*Cities, Towns and Counties*, CHAIRMAN; *Banks and Financial Institutions*; *Fisheries*; *Judiciary*; *Military, Naval and Veterans' Affairs*.

LEE, VIRGIL R. (Republican) Senator from the 20th District of Lewis County, was born in Indiana in 1895 and is 53 years of age. He was first elected to the House in 1940 and to the Senate in 1942, serving three regular and one special session. In 1947 he was Chairman of the Insurance Committee. He is a graduate of Western Washington College of Education and is now an insurance agent. He served in World War I as a 2nd Lieutenant. He is past Exalted Ruler of Chehalis Elks Club, Past President of the Chehalis Rotary Club and a member of the American Legion. Married in 1917, he has one son, William age 27. He resides at 1046 Hillside Drive, Chehalis and his local address is the Olympian Hotel, phone 4451.

COMMITTEE ASSIGNMENTS--*Revenue and Taxation*, CHAIRMAN; *Insurance*; *Liquor Control*; *Roads and Bridges*; *Rules and Joint Rules*.



LINDSAY, RODERICK A. (Democrat) Senator from the 4th District of Spokane County, was born in Seattle, Washington, in 1903 and is 45 years of age. First elected to the House in 1938 and to the Senate in 1940, he served as Chairman of Banks and Banking in 1939 and 1941. A graduate of Washington State College, he is President of First Federal Savings and Loan Association of Spokane. He served for four years in World War II, and is a member of the Eagles, Elks and Delta Sigma Phi. Married in 1930, he has two daughters, Mary Beth 12 and Judith Ann 10. He is a Catholic and resides at 1230 E. 20th Spokane. His local address is 2029 East Bay Drive, phone 5050.

COMMITTEE ASSIGNMENTS--*Banks and Financial Institutions*; *Game and Game Fish*; *Insurance*; *Parks and Public Buildings*; *Public Morals*.

LINDSTROM, CARL R. (Democrat) Senator from the 27th District of Pierce County, was born in Minnesota in 1917 and is 31 years of age. Elected to the Senate in 1948, he is serving his first session. He has a public school and extension course education in technology and economics. He is engaged in the real estate business and is a member of the Moose Lodge. No longer married, he has one son, James Allan. He resides at 726 St. Helens Avenue, Tacoma and his local address is Tacoma.

COMMITTEE ASSIGNMENTS--*Agriculture and Livestock*; *Game and Game Fish*; *Industrial Insurance*; *Insurance*; *Social Security and State Institutions*.



MEMBERS OF THE STATE SENATE



McCUTCHEON, JOHN T. (Republican) Senator from the 26th District of Pierce County, was born at Tacoma, Washington, in 1892 and is 56 years of age. First elected in 1942, he has served one term in the House and two in the Senate. In 1943 he was Chairman of the Constitutional Revision committee and in 1947 of Cities, Towns and Counties. He was Asst. U. S. Attorney in Tacoma from 1927 to 1932 and mayor of Steilacoom from 1929 to 1935. He is a graduate of the University of Washington and University of Indiana Law School. He is a member of the Eagles, F. & A.M. and the Grange. Married in 1920 he has three children, Kathryn 27, John 25 and Sarah 19. An Episcopalian, he resides at Steilacoom. His local address is in care of Mrs. C. O. Frisch.

COMMITTEE ASSIGNMENTS--*Commerce, Manufacturing and Transportation, CHAIRMAN; Higher Education and Libraries; Judiciary; Public Utilities; State Resources. Forestry and Lands.*

McDONALD, CHARLES JOSEPH (Republican) Senator from the 35th District of King County, was born at Charlottetown, Prince Edward Island, Canada, in 1879 and is 69 years of age. First elected in 1946, he was Chairman in 1947 of the Engrossed and Enrolled Bills committee. In 1909 he was a member of the 25th Session of the House from Multnomah County, Oregon. He is a retired teacher and is a member of the Elks, Eagles, and Knights of Columbus. A Catholic, he was married in 1927 and resides at 603 Marion St., Seattle. His local address is 1066 Columbia, phone 22895.

COMMITTEE ASSIGNMENTS--*Engrossed and Enrolled Bills, CHAIRMAN; Aeronautics and Airports; Higher Education and Libraries; Medicine and Dentistry; Social Security and State Institutions.*



McMULLEN, DALE (Republican) Senator from the 17th District of Clark County, was born at Ewart, Michigan, in 1893 and is 55 years of age. He was Prosecuting Attorney of Clark County from 1926 to 1934. A graduate of the University of Oregon, he served in World War I and is a member of the Elks, I.O.O.F., and the American Legion. A widower, he was married in 1917, and has two children, Robert 30 and Nancy Johnstone 24 years of age. He is a Protestant and resides at Vancouver. His local address is Olympian Hotel, phone 4451.

COMMITTEE ASSIGNMENTS--*Military, Naval and Veterans' Affairs, CHAIRMAN; Game and Game Fish; Industrial Insurance; Judiciary; Revenue and Taxation; Social Security and State Institutions.*

MILLER, DONALD B. (Democrat) Senator from the 5th District of Spokane County, was born in the State of Washington and is 37 years of age. First elected to the House of Representatives in 1936 he served in the 1937, 1939 and 1943 Sessions of the House and in the 1949 Session of the State Senate. In 1937 he served as Chairman of the Committee on Parks and Playgrounds. Senator Miller is an attorney and served as Deputy Prosecutor of Kitsap County for a period. He resides at 703 E. Wabash Avenue, Spokane. His Olympia address is the Governor Hotel.

COMMITTEE ASSIGNMENTS--*Industrial Insurance; Reclamation and Irrigation; Social Security and State Institutions.*



MEMBERS OF THE STATE SENATE



MORGAN, LESLIE V. (Republican) Senator from the 14th District of Yakima County, was born in the State of Washington and is 57 years of age. He was first elected to the House of Representatives in 1934 and to the State Senate in 1944 and again in 1948. He served as Chairman of the Committee on Education in the 1947 and 1949 Sessions. A fruit farmer by profession, Senator Morgan resides on R. F. D. No. Four, Yakima. His Olympia address is 207 Carlyon St.

COMMITTEE ASSIGNMENTS--*Education, CHAIRMAN; Agriculture and Livestock; Cities, Towns and Counties; Parks and Public Buildings; Reclamation and Irrigation; Roads and Bridges.*

OSTRANDER, FRANK T. (Republican) Senator from the 45th District of King County was born at Denver, Colorado, in 1891 and is 57 years of age. He was first elected in 1946 and in 1947 was Chairman of the Labor committee. After finishing high school he had a University Extension Course in Mechanical Engineering and is at present a Fraternal Secretary. He is a member of the Elks and Masonic lodges. Married, he has three children, Frank 32, John 25 and Lucille (Mrs. Warren) Bliz 27. He is a Protestant and resides at 1143 N. 76th St., Seattle; his local address is the Governor Hotel, phone 6622.

COMMITTEE ASSIGNMENTS--*Industrial Insurance, CHAIRMAN; Insurance; Labor; Liquor Control; Public Morals; Social Security and State Institutions.*



PARKER, LESTER T. (Republican) Senator from the 21st District from Grays Harbor County, was born in Seattle, Washington, in 1900 and is 48 years of age. He was first elected in 1942 and has served two terms. In 1947 he was Chairman of Judiciary and is President Pro-tem for 1949. He has served as a State Assistant Attorney General and as Deputy Prosecuting Attorney of Grays Harbor County. He is a graduate of the University of Washington Law School. He served in the army in World War I and is a member of the Masons, the Elks, and the Eagles. He married in 1928 and has two children, Lester Thomas Jr., 18 and Joan 14. He resides at 1007 Alden Road, Aberdeen and his local address is 205 E. 25th St., phone 4231.

COMMITTEE ASSIGNMENTS--*Cities, Towns and Counties; Fisheries; Judiciary; Liquor Control; Rules and Joint Rules; State Resources, Forestry and Lands.*



PEARSON, FRANCIS (Democrat) Senator from the 24th District of Clallam County, was born in Seattle, Washington, in 1909 and is 39 years of age. He was first elected to the House in 1936, serving five terms. He is in the music business and is a member of the Elks, Eagles, and the Grange. A member of the Episcopal Church, he married in 1946 and has two step-children, Anthony 7 and Nicholetta Pearson age 5. He resides at 215 W. 6th, Port Angeles. His local address is the Governor Hotel, phone 6622.

COMMITTEE ASSIGNMENTS--*Labor; Medicine and Dentistry; Reclamation and Irrigation; Revenue and Taxation; Roads and Bridges.*



MEMBERS OF THE STATE SENATE



ROBERTSON, J. H. (Republican) Senator from the 8th District from Lincoln County. He was first elected to the Senate in 1942 and has served four terms and one special session. In 1943 he was Chairman of the Parks and Playgrounds committee and in 1947 was Chairman of Roads and Bridges. He has served as County Commissioner of Lincoln County. He resides at Creston and his local address is 1610 Water Street, phone 21500.

COMMITTEE ASSIGNMENTS--*Roads and Bridges, CHAIRMAN; Aeronautics and Airports; Constitution, Elections and Apportionment; Education; Parks and Public Buildings.*

ROGERS, JACK HENRY (Democrat) Senator from the 23rd District of Kitsap County, was born in Utah, in 1915 and is 33 years of age. He was first elected in 1944 and in 1945 served as Chairman of the Cities, Towns and Counties committee and in 1947 as Chairman of Fisheries. He was Coronor of Kitsap County from 1942 to 1946. He attended the Bremerton high school and had two years at the University of Washington. He is owner of a weekly newspaper, member of the Elks, Eagles and Washington Athletic Club. Married in 1937, he has two children, Mary Ellen 8 and Cathy Ann 6. He is an Episcopalian and resides at 1907 5th, Bremerton. His local address is 916 Legion Way, phone 23796.

COMMITTEE ASSIGNMENTS--*Appropriations; Education; Fisheries; Revenue and Taxation; Roads and Bridges; Rules and Joint Rules.*



ROSELLINI, ALBERT D. (Democrat) Senator from the 33rd District of King County, was born in Tacoma, Washington, in 1910 and is 38 years of age. He was first elected in 1938 and in 1939 served as Chairman of the Corporations committee, in 1941 and 1943 of Public Morals. In 1945 he was Chairman of Claims, Auditing and Public Morals. He has served as an Assistant State Attorney General and Deputy Prosecutor of King County. He is a graduate of the University of Washington in Liberal Arts and Law. He is a member of Tau Kappa Epsilon, Moose, Modern Woodmen of the World. Married in 1937, he has two children, John 9 and Jane age 7. He is a Catholic and resides at 3838 Cascadia, Seattle. His local address is the Governor Hotel, phone 6822.

COMMITTEE ASSIGNMENTS--*Appropriations; Claims and Auditing; Judiciary; Liquor Control; Rules and Joint Rules.*

ROUP, HOWARD (Democrat) Senator from the 10th District of Asotin County, was born in 1885 in North Carolina and was first elected to the Senate in 1936. In 1947 he was Chairman of the Agriculture committee. He served for two years as County Commissioner of Asotin County. He is a high school and normal school graduate and is a farmer and stockman. He is a member of the Elks, Moose and Masonic lodges. Married in 1914, he resides in Asotin and is a member of the Baptist Church. His local address is 1060 Adams Street, phone 5077.

COMMITTEE ASSIGNMENTS--*Agriculture and Livestock, CHAIRMAN; Banks and Financial Institutions; Constitution, Elections and Apportionment; Education; Public Utilities.*



MEMBERS OF THE STATE SENATE



RUTTER, ROBERT L., JR. (Republican) Senator from the 13th District of Kittitas County, was born in Spokane, Washington, and is 54 years of age. First elected in 1946, he was Chairman of Irrigation and Reclamation in the 1947 Session. A high school graduate, he is a farmer. He married in 1914 and has three children, Olive Isabel age 32, Robert L. age 31 and Gale age 26. He is a member of the Episcopal Church and his home address is P. O. Box 97, Ellensburg. His local address is the Olympian Hotel, phone 4451.

COMMITTEE ASSIGNMENTS--*Reclamation and Irrigation, CHAIRMAN; Agriculture and Livestock; Parks and Public Buildings; Social Security and State Institutions.*

SAPP, JESS V. (Democrat) Senator from the 40th District of Skagit County, was born at Apple Grove, N. C., in 1899 and is 49 years of age. He was first elected in 1944 and was Vice-Chairman of Roads and Bridges. In 1945 he was Supervisor of Labor in the Mt. Vernon District for two years. A rancher and insurance agent, he is a member of the Eagles, Grange and State Farm Bureau. A Methodist, he was married in 1919 and has two sons, John 28 and Jess Jr. 26 years of age. He resides at Sedro Woolley and his local address is the Olympian Hotel, phone 4451.

COMMITTEE ASSIGNMENTS--*Mines and Mining, CHAIRMAN; Appropriations; Insurance; Roads and Bridges; Social Security and State Institutions.*



SCHROEDER, TED F. (Democrat) Senator from the 25th District of Pierce County, was born in the State of Washington and is 46 years of age. He was first elected to the House of Representatives in 1934 and to the State Senate in 1938, being re-elected in 1942 and 1946. He served as Vice-Chairman of Military and Naval Affairs in 1943 and 1945; as Chairman of Forestry and Logged-Off Lands in 1939 and as Chairman of State Resources, Forestry and Lands in 1945 and 1947. Senator Schroeder is a merchant and manufacturer and resides at 728 North Meridian, Puyallup. His local address is Puget Street, Olympia.

COMMITTEE ASSIGNMENTS--*Appropriations; Judiciary; Military, Naval and Veterans' Affairs; Rules and Joint Rules; State Resources, Forestry and Lands.*

SEARS, CARLTON IRVING (Republican) Senator from the 22nd District of Thurston County, was born at Shopiere, Wisconsin, in 1889 and is 59 years of age. He is Chairman of the Banks and Financial Institutions committee. He is a graduate of the University of Washington in Pharmacy, and is a member of the Elks, Masons and Rotary Club. He is engaged in property management. Married in 1917, he has two daughters, Elizabeth Ann Davis and Sarah Louise Giovine. He is a member of the Episcopal Church and resides at 2412 Columbia, Olympia, phone 4265.

COMMITTEE ASSIGNMENTS--*Banks and Financial Institutions, CHAIRMAN; Commerce, Manufacturing and Transportation; Constitution, Elections and Apportionment; Medicine and Dentistry; Reclamation and Irrigation; Social Security and State Institutions.*



MEMBERS OF THE STATE SENATE



SHANK, CORWIN PHILIP (Republican) Senator from the 46th District of King County, was born in Seattle, in 1896 and is 52 years of age. He was first elected in 1946 and was Chairman of Banks and Banking in 1947. A graduate of the University of Washington he is an Attorney. He is a member of Phi Delta Theta, Phi Delta Phi (Honorary Legal fraternity) and Lions International. He served in the Army in 1917. Married in 1918, he has two children, Barbara and David, is a Baptist and resides in Kirkland. His local address is 221 W. 20th, phone 3262.

COMMITTEE ASSIGNMENTS--*Judiciary, CHAIRMAN; Commerce, Manufacturing and Transportation; Fisheries; Insurance; Public Morals.*

TISDALE, CLYDE V. (Democrat) Senator from the 19th District of Pacific County, was born at Inwood, California, in 1890 and is 58 years of age. First elected in 1936, he has served four terms in the House and two in the Senate. In 1941 and 1943 he was Chairman of Industrial Insurance in the House and in 1945 in the Senate. He is a woodsman and is a member of the Eagles. Married, he has five children, William 34, Robert 32, Betty 26, Jean 24 and Noreen 22 years of age. He resides at Raymond and his local address is the Olympian Hotel, phone 4451.

COMMITTEE ASSIGNMENTS--*Engrossed and Enrolled Bills; Industrial Insurance; Military, Naval and Veterans' Affairs; Roads and Bridges; State Resources, Forestry and Lands.*



TODD, JOHN N. (Democrat) Senator from the 31st District of King County, was born at Genoa, Nebraska, in 1885 and is 63 years of age. He was first elected to the Senate in 1942 and served as Chairman of Flood Control in 1943. In 1945 he was Chairman of Mines and Mining. He served on the Mercer Island School Board in 1920 and at present is a member of the King County Planning Commission. He is a graduate of the University of Illinois in Engineering and is a Mason. Married in 1912 and in 1947, he has five children, Ruth 36, John 34, Harriet 32, Mary Ethel 27, and Ella May 24. A member of the Congregational Church, he resides at Mercer Island; local address, 1611 Water, phone 6030.

COMMITTEE ASSIGNMENTS--*Reclamation and Irrigation; Labor; Mines and Mining; Roads and Bridges; Social Security and State Institutions.*

WESTBERG, ALFRED J. (Republican) Senator from the 37th District of King County, was born in Seattle, Washington, in 1905 and is 43 years of age. He served his first term in the Senate in 1947 and was Chairman of State Penal and Reformatory Institutions. He served on the Freeholder Commission for preparation of a City Charter for Seattle from 1945 to 1946. He is a graduate of the University of Washington, receiving his A.B. in 1925 and LL.B in 1927. An attorney, he was married in 1928 and has three children, Alfred, Jr., 19, Robert 16 and De Witt 8 years of age. He is a member of the Episcopal Church and resides at 2802 E. John St., Seattle. His local address is the Governor Hotel, 6622.

COMMITTEE ASSIGNMENTS--*Liquor Control, CHAIRMAN; Judiciary; Cities, Towns and Counties; Higher Education and Libraries; Insurance; Roads and Bridges.*



MEMBERS OF THE STATE SENATE



WITTEN, DAYTON A. (Republican) Senator from the 30th District of King County, was born in Pierce, Nebraska, in 1896 and is 53 years of age. He was first elected to the Senate in 1946 and in 1947 served as Chairman of Parks and Public Buildings. He is a high school graduate and attended college for one year. He served in the U. S. Navy in World War I and is a member of the Elks, Masons and Eagles. He is a member of the Presbyterian Church and resides at 902 First N.E., Auburn. His local address is the Olympian Hotel, phone 4451.

COMMITTEE ASSIGNMENTS--*Aeronautics and Airports*, CHAIRMAN; *Cities, Towns and Counties*; *Liquor Control*; *Parks and Public Buildings*; *Reclamation and Irrigation*; *Roads and Bridges*.

ZEDNICK, VICTOR (Republican) Senator From the 36th District of King County, was born in Denver, Colorado, in 1885 and is 63 years of age. First elected to the House in 1911, he served four sessions and four in the Senate. In 1917 he was Chairman of State Granted, School and Tide Lands; in 1943 of State Resources, Forestry and Lands; in 1947 of Constitution, Elections and Apportionment. A graduate of the University of Washington, he is an attorney and an Executive Secretary. He is a member of the Masons, Shrine, Elks, Eagles, Moose, Sigma Alpha Epsilon and Phi Delta Phi. Married in 1911, he has three children, Phyllis 33, Florence 31 and Helen Frances 27. He is a Presbyterian and resides at 1611 6th West, Seattle; local address Governor Hotel, ph.6622.

COMMITTEE ASSIGNMENTS--*Constitution, Elections and Apportionment*, CHAIRMAN; *Appropriations*; *Banks and Financial Institutions*; *Education*; *Judiciary*; *Rules and Joint Rules*.



HUNTLEY, ERNEST C. (Republican) Senator from the 9th District of Whitman County, was born in the State of Washington and is 58 years of age. First elected to the Senate in 1940, he served in the sessions of 1941, 1943, 1944 Extra Session, 1945, 1947 and 1949. In the 1941 Session he was Vice-Chairman of the Committee on Banks and Banking; in 1943 he was Chairman of the Agriculture Committee and in 1947 he was Chairman of the Committee on Claims and Auditing. He resigned his Senatorial post after being appointed to the State Tax Commission by Governor Langlie and was replaced in the Senate by Representative Asa V. Clark. Mr. Huntley is from Colfax and his Olympia address is 1813½ S. Franklin.





SENATE COMMITTEE ON SOCIAL SECURITY



SEATED (READING CLOCKWISE BEGINNING IN FRONT) SENATORS SEARS, SAPP, REPS. KNOBLAUCH, HOOP-INGARNER, SENATOR HUTCHINSON, REP. DILLARD, SENATOR DAHL-VICE CHAIRMAN, REP. MRS. VINCENT JONES, SENATORS DAVISON, TODD, McMULLEN, KEEFE, EARLYWINE. STANDING: REPS. CORY AND RHODES. ABSENT: SENATORS HALL-CHAIRMAN, COPELAND, LINDSTROM, McDONALD, MILLER, OSTRANDER AND RUTTER.

SENATE COMMITTEE ON APPROPRIATIONS

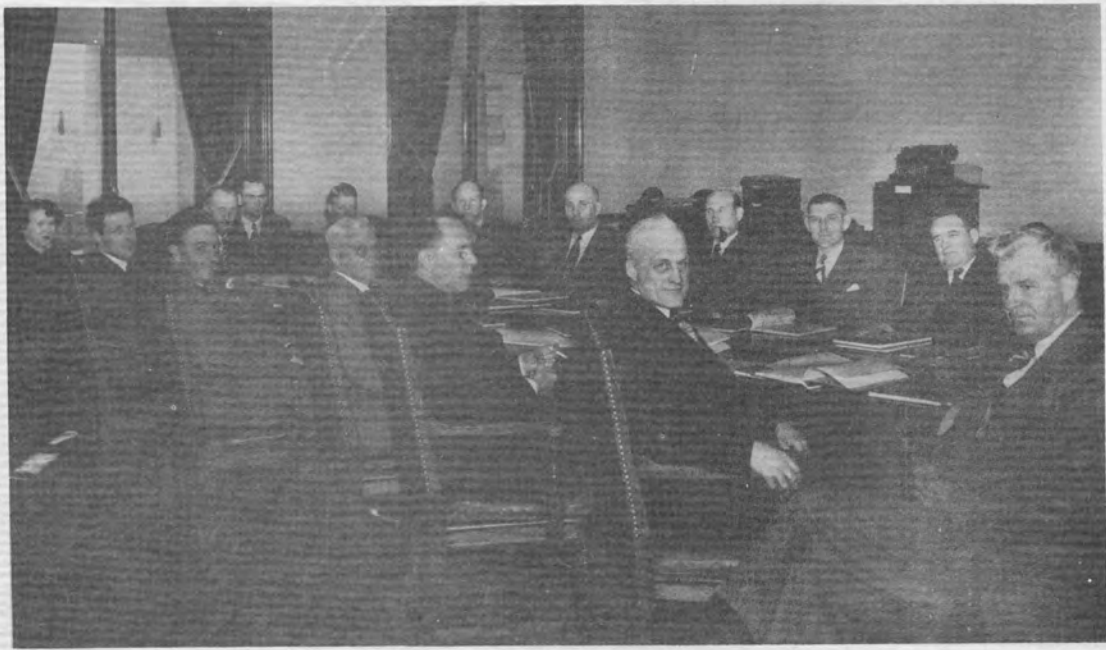


SEATED (READING CLOCKWISE) REP. NEILL, SEN. GANDERS, REP. THOMPSON, SEN. ROUP, REP. JEF-FREYS, SEN. COPELAND, SEN. HARLEY-CHAIRMAN, REPS. VANE (BEHIND NEILL), MARDESICH, BARGREEN, SEN. CLARK, REP. FRAYN. STANDING: BRABROOK-BUDGET DIRECTOR, FRANCES HALSTEAD-SECRETARY, RUBE GOL-LIET-CLERK, OMDAHL-DIRECTOR OF AGRICULTURE, SEN. SAPP, REPS. SIMMONS, HENDERSON, MIKE GALLAGHER, SEN. DAVISON, REP. SMILEY. ABSENT: BINZER, FLANAGAN, HAPPY, ROGERS, ROSELLINI, SCHROEDER, ZEDNICK.





SENATE COMMITTEE ON ROADS AND BRIDGES



SEATED (READING CLOCKWISE FRONT TO BACK) SENATORS SAPP, WITTEN, JONES, TODD, FRENCH, ROGERS, ROBERTSON-CHAIRMAN, BINZER, TISDALE, CLARK, MORGAN, LEE, PEARSON. COMMITTEE EMPLOYEES: LORENZ GOETZ-CLERK; MRS. IRENE KENNEY-SECRETARY. ABSENT: SENATORS JACKSON AND WESTBERG.

SENATE COMMITTEE ON JUDICIARY



SEATED (READING CLOCKWISE FROM LEFT REAR) SENATORS MCCUTCHEON, PARKER, WESTBERG, EDWARDS, LISLE GUERNSEY-COMMITTEE CLERK, SHANK-CHAIRMAN, MRS. MILDRED NEAL-COMMITTEE SECRETARY, GRIEVE, ZEDNICK, MCMULLEN, SCHROEDER, KIMBALL. ABSENT: ROSELLINI.





*The House of
Representatives
of the
State of Washington*





HOUSE
Members of the House of Representatives, Regular Session, 1949

NAME	P. O. ADDRESS	COUNTIES REPRESENTED	Dist. No.	PARTY
Adams, Geo. N.....	Star Rt. 1, Box 165, Shelton.....	(Clallam.....) (Jefferson.....) (Mason.....)	24	Democratic
Allen, W.O.....	1314 W. Fairview, Spokane 12.....	Spokane, part.....	3	Democratic
Anderson, B. Roy.....	314 Colman Bldg., Seattle 4.....	King, part.....	36	Republican
Anderson, Eva.....	Box 156, Chelan.....	Chelan.....	12	Republican
Ball, Howard T.....	327 S. Jefferson, Spokane.....	Spokane, part.....	7	Republican
Bargreen, Howard.....	2821 Rucker Ave., Everett.....	(Snohomish, part) (Island, part.....)	38	Democratic
Bassett, Arthur H.....	1902 N. Prospect, Tacoma.....	Pierce, part.....	26	Republican
Beierlein, W.J.....	112 E. Main Street, Auburn.....	King, part.....	30	Democratic
Bergevin, Arthur.....	Lowden.....	Walla Walla.....	11	Democratic
Bernethy, Robert.....	Route 2, Monroe.....	(Snohomish, part.) (Island, part.....)	39	Democratic
Blair, Robert E.....	Liberty Lake.....	Spokane, part.....	4	Democratic
Boede, Violet P.....	Olga, Orcas Island.....	(San Juan.....) (Skagit.....)	40	Democratic
Brown, Gordon J.....	237 Farallone, Fircrest, Tacoma.....	Pierce, part.....	29	Democratic
Brown, Henry A.....	Route 2, Box 260, Poulsbo.....	Kitsap.....	23	Democratic
Brown, Vaughan.....	1004 16th St., Bellingham.....	Whatcom, part.....	42	Democratic
Buse, Edward A.....	918 Taylor St., Port Townsend.....	(Clallam.....) (Jefferson.....) (Mason.....)	24	Democratic
Callow, Arthur L.....	Box 319, Elma.....	(Grays Harbor,....) (...except 17.....) (Precincts.....)	21	Democratic
Carmichael, Wallace I....	Box 736, Everett.....	(Snohomish, part.) (Island, part.....)	38	Democratic
Carroll, Charles M.....	1919 30th Ave. S., Seattle.....	King, part.....	33	Democratic
Carty, W. E.....	Route 1, Box 19, Ridgefield.....	Clark.....	17	Democratic
Clark, Asa V.....	305 Oak St., Apt. 3, Pullman.....	Whitman.....	9	Republican
Comfort, A.B.....	626 Rust Bldg., Tacoma 2.....	Pierce, part.....	26	Republican
Cory, Arthur S.....	P.O. Box 329, Chehalis.....	Lewis.....	20	Republican
Coughlin, Paul.....	525 Central Bldg., Seattle 4.....	King, part.....	44	Democratic
Dillard, James P.....	1124 W. 8th Ave., Spokane.....	Spokane, part.....	7	Democratic
Donohue, Dewey C.....	Route 3, Dayton.....	(Asotin.....) (Columbia.....) (Garfield.....)	10	Democratic
Eldridge, Wesley.....	818 N. 43rd St., Seattle 3.....	King, part.....	32	Republican
Farrington, Clayton.....	517 E. 14th St., Olympia.....	Thurston.....	22	Democratic
Ford, Robert M.....	P. O. Box 103, Bremerton.....	Kitsap.....	23	Democratic
Forshee, Chester D.....	8040 15th Ave. N.W., Seattle 7.....	King, part.....	44	Republican
Foster, F. Stuart.....	331 Miller Bldg., Yakima.....	Yakima, part.....	14	Republican
Frayn, R. Mort.....	2622 Boylston Ave. N., Seattle 2.....	King, part.....	43	Republican
Gallagher, Bernard J.....	418 E. Liberty, Spokane.....	Spokane, part.....	3	Democratic
Gallagher, Michael J.....	8045 Burke Ave., Seattle 3.....	King, part.....	45	Democratic
Gordon, J. Chester.....	LaCrosse.....	Whitman.....	9	Republican
Hallauer, Wilbur G.....	P. O. Box 1398, Oroville.....	(Douglas.....) (Okanogan.....) (Cowlitz.....)	1	Democratic
Hansen, Julia Butler.....	Cathlamet.....	(Wahkiakum.....)	18	Democratic
Henderson, Edwin A.....	622 E. 4th Ave., Olympia.....	Thurston.....	22	Democratic
Hillyer, Alfred S.....	412 S. 9th St., Sunnyside.....	Yakima, part.....	15	Republican
Hodde, Chas. W.....	Box 208, Colville.....	(Pend Oreille.....) (Stevens.....)	2	Democratic
Hoefel, David.....	209 W. 6th St., Ritzville.....	(Adams.....) (Ferry.....) (Lincoln.....)	8	Republican
Hofmeister, Louis E.....	P. O. Box 203, Enumclaw.....	King, part.....	30	Democratic
Holliday, Mark V.....	604 N.W. Utah St., Camas.....	Clark.....	17	Democratic
Hoopingartner, Russel T....	Cheney.....	Spokane, part.....	5	Democratic
Jeffreys, Sidney S.....	Pomeroy.....	(Asotin.....) (Columbia.....) (Garfield.....)	10	Republican
Johnston, Elmer E.....	714 W. 14th Ave., Spokane 9.....	Spokane, part.....	6	Republican
Jones, John R.....	Box 343, Waterville.....	(Douglas.....) (Okanogan.....)	1	Democratic
Jones, Mrs. Vincent F.....	3021 E. 135th St., Seattle 55.....	King, part.....	46	Republican
Kelley, Grace.....	106 S. G St., Aberdeen.....	(Grays Harbor....) (...except 17.....) (...precincts.....)	21	Democratic





HOUSE (Continued)
Members of the House of Representatives, Regular Session, 1949

NAME	P.O. ADDRESS	COUNTIES REPRESENTED	Dist. No.	PARTY
King, Chet.....	P.O. Box 283, Raymond.....	Pacific, and... (part Grays... Harbor.....)	19	Democratic
Kinnear, George.....	1026 Henry Bldg., Seattle 1.....	King, part.....	36	Republican
Knoblauch, Reuben A.....	317 Wahle Road, Sumner.....	Pierce, part.....	25	Democratic
Kupka, George W.....	801 S. G St., Tacoma 3.....	Pierce, part.....	27	Democratic
Mardesich, Tony P.....	1821 Grand Ave., Everett.....	(Snohomish, pt.) Island, part....)	38	Democratic
McPherson, A. B.....	3406 R. St., Vancouver.....	Clark.....	17	Democratic
Miller, C. C.....	Rt. 2, Box 168, Kennewick.....	(Benton.....) Franklin.....	16	Democratic
Miller, Clyde James.....	Rt. 3, Box 356, Kelso.....	(Klickitat.....) Skamania.....	18	Democratic
Miller, Floyd C.....	2303 N. 62nd St., Seattle 3.....	Cowlitz.....	18	Democratic
Mohr, Carl F.....	Route 5, Spokane 15.....	(Wahkiakum....)	45	Democratic
Morris, R.E. (Ray).....	4729 Roosevelt Way, Seattle 5....	King, part.....	4	Democratic
Nunamaker, Homer O.....	701 11th St., Bellingham.....	Spokane, part....	32	Democratic
O'Brien, John L.....	4209 Findlay St., Seattle.....	King, part.....	42	Democratic
Olson, Ole H.....	Box 222, Pasco.....	(Whatcom, part... Benton.....)	33	Democratic
Paulsen, Arthur R.....	224 S. 59th St., Tacoma 8.....	Franklin.....	16	Democratic
Pedersen, Charles A.....	1112 Meridian Rd., Bellingham....	(Klickitat.....) Skamania.....)	28	Democratic
Powell, George V.....	822 39th Ave. N., Seattle.....	Pierce, part.....	41	Republican
Rasmussen, A.L. (Slim)....	622 S. 35th St., Tacoma.....	Whatcom, part...)	37	Democratic
Raugust, W.C.....	Odessa.....	King, part.....	28	Republican
Rhodes, G. Frank.....	608 S. Ainsworth, Tacoma 6.....	(Adams.....) Ferry.....	8	Democratic
Ridgway, Emma Abbott....	413 Talcott St., Sedro-Woolley....	(Lincoln.....) Pierce, part.....	27	Democratic
Riley, Edward F.....	605 Spring St., Seattle 4.....	(San Juan.....) Skagit.....)	40	Democratic
Roderick, David M.....	901 6th Ave., Apt. 404, Seattle 4..	King, part.....	35	Democratic
Rogers, Jack V.....	No. 7 Rogercrest, Wenatchee....	King, part.....	35	Democratic
Rosenberg, K. O.....	RFD No. 1, Addy.....	Chelan.....	12	Republican
Sandison, Gordon.....	Box 933, Port Angeles.....	(Pend Oreille... Stevens.....)	2	Democratic
Schumann, O. R.....	326 Miller Bldg., Yakima.....	(Clallam.....) Jefferson.....)	24	Democratic
Shadboit, Loomis J.....	205 S. 30th Ave., Yakima.....	(Mason.....) Yakima, part....)	14	Republican
Shannon, William D.....	1802 Parkside Dr., Seattle 2.....	Yakima, part....)	14	Republican
Simmons, Kenneth H.....	Bonney Lake, Sumner.....	King, part.....	43	Republican
Sisson, Grant C.....	RFD No. 2, Mount Vernon.....	Pierce, part.....	25	Democratic
Smiley, Reuben T.....	407 E. LaCrosse, Spokane.....	(San Juan.....) Skagit.....)	40	Republican
Smith, Ralph A.....	Long Beach.....	Spokane, part....)	5	Democratic
Smith, Vernon Anthony....	4721 17th Ave. N.E., Seattle 5....	(Pacific, and... part Grays... Harbor.....)	19	Democratic
Sprague, Ray W.....	701 N. Washington, Centralia....	King, part.....	46	Republican
Stonecipher, James D.....	RFD No. 3, Waitsburg.....	Lewis.....	20	Republican
Sutherland, Patrick D.....	1923 Smith Tower, Seattle.....	Walla Walla.....	11	Republican
Testu, Jeanette.....	2138 41st Ave. S.W., Seattle 6....	King, part.....	37	Democratic
Thompson, George R.....	1411 Adams Ave., Chehalis.....	King, part.....	34	Democratic
Vane, Z. A.....	6014 S. Warner, Tacoma.....	Lewis.....	20	Republican
Washington, Nat W.....	42 C Street N.W., Ephrata.....	Pierce, part.....	29	Democratic
Watson, Jimmie G.....	3911 Holden St., Seattle 8.....	(Grant.....) Kittitas.....)	13	Democratic
Wedekind, Max.....	3729 40th Ave. S.W., Seattle 6....	King, part.....	31	Democratic
Wenberg, Oscar.....	Box No. 1, East Stanwood.....	King, part.....	34	Democratic
Wilson, John N.....	Box 93, Mercer Island.....	(Snohomish, pt.) Island, part....)	39	Democratic
Winberg, Andrew.....	110 West 3rd St., Aberdeen.....	King, part.....	31	Democratic
Woodall, Perry B.....	P.O. Box 507, Toppenish.....	(Grays Harbor, except 17..... precincts.....)	21	Democratic
Wyatt, Daily S.....	Box 86, Ferndale.....	Yakima, part....)	15	Republican
Young, R.C. (Brigham)....	106 N. Maple, Ellensburg.....	Whatcom, part...)	41	Democratic
Zent, Harold (Judge).....	403 Peyton Bldg., Spokane 8.....	(Grant.....) Kittitas.....)	13	Democratic
		Spokane, part....)	6	Republican





HOUSE COMMITTEE ASSIGNMENTS — 1949

AGRICULTURE AND LIVESTOCK (16)

Jones, John R., Chairman; Anderson, Eva, Bergevin, Carty, Gordon, Hoefel, Hofmeister, Hoopingarner, Jeffreys, Knoblauch; Miller, C. C.; Rosenberg, Thompson, Woodall, Wyatt, Young.

APPROPRIATIONS (21)

Riley, Chairman; O'Brien, Vice-Chairman; Allen, Bargreen, Boede, Clark, Frayn; Gallagher, Bernard J.; Gallagher, Michael; Henderson, Hoefel, Jeffreys, Kinnear, Mardesich, Schumann, Shannon, Simmons, Smiley, Thompson, Vane, Watson.

AVIATION AND AIRPORTS (9)

Dillard, Chairman; Allen, Clark, Carmichael, Hallauer, Hofmeister, Nunamaker, Stonecipher, Watson.

BANKS AND BANKING (9)

Sutherland, Chairman; Adams; Anderson, B. Roy; Beierlein, Clark, Cory, Dillard, Simmons, Winberg, Andrew.

CITIES AND COUNTIES (11)

O'Brien, Chairman; Blair; Brown, Henry A.; Callow, Donohue, Forshee, Kupka, Nunamaker, Rogers, Simmons, Sprague.

CLAIMS, AUDITING AND PRINTING (6)

Callow, Chairman; Brown, Vaughan; Donohue, Frayn, Hillyer; Jones, John R.

COLLEGES AND UNIVERSITIES (15)

Wilson, Chairman; Anderson, Eva; Brown, Vaughan; Clark, Eldridge, Frayn, Hoopingarner, Olson, Powell, Ridgway, Riley, Shadbolt, Washington, Young, Zent.

COMMERCE AND MANUFACTURING (9)

Carroll, Chairman; Forshee, Kinnear, Kupka, Morris; Smith, Vernon A.; Sutherland, Wilson, Zent.

EDUCATION AND LIBRARIES (19)

Foster, Chairman; Anderson, Eva; Bassett, Bergevin, Boede, Carty, Donohue, Farrington, Ford, Gordon, Hansen, Holliday; Jones, Mrs. Vincent; Knoblauch, Morris, Ridgway, Riley, Testu, Thompson.

ELECTIONS (13)

Gallagher, Michael J., Chairman; Bassett, Blair; Brown, Vaughan; Buse, Eldridge, Kelley, McPherson; Miller, C. C.; Powell, Sprague, Woodall, Wyatt.

ENGROSSMENT AND ENROLLMENT (13)

Comfort, Chairman; Ball; Brown, Gordon J.; Carmichael, Farrington, King; Miller, Floyd C.; Rhodes, Shannon; Smith, Vernon A.; Testu, Thompson, Wyatt.

FISHERIES (13)

Boede, Chairman; Adams, Coughlin, Farrington, Forshee, King; Miller, Clyde James; Nunamaker, Pedersen, Rasmussen, Wedekind; Winberg, Oscar; Winberg, Andrew.

FORESTRY, STATE LANDS AND BLDGS. (11)

Bernethy, Chairman; Buse, Henderson, Hoefel, Jeffreys, King, Olson, Rogers, Shannon; Smith, Ralph A.; Wilson.

GAME AND GAME FISH (11)

Simmons, Chairman; Bergevin, Ball, Hallauer, Henderson, Hoefel, Hoopingarner; Miller, Clyde James; Mohr, Sisson, Vane.

HARBORS, WATERWAYS AND FLOOD CONTROL (7)

Mardesich, Chairman, Hansen, Kupka, McPherson; Miller, C. J.; Shannon, Wedekind.

HORTICULTURE (7)

Hallauer, Chairman; Boede, Hillyer, Mohr, Rogers, Shadbolt, Simmons.

INDUSTRIAL INSURANCE (13)

Brown, Henry A., Chairman; Bernethy; Brown, Gordon J.; Comfort, Farrington, Holliday, Johnston, Kelley, King, Mohr, Paulsen, Smiley, Zent.

INSURANCE (9)

Sandison, Chairman; Bassett, Cory, Ford, Forshee, Pedersen, Smiley, Sutherland, Wyatt.





HOUSE COMMITTEE ASSIGNMENTS — 1949

JUDICIARY (16)

Paulsen, Chairman; Blair; Brown, Vaughan; Coughlin, Dillard, Foster; Gallagher, Bernard J.; Johnston, Kinnear, Mardesich, O'Brien, Powell, Schumann, Sutherland, Washington, Woodall.

LABOR RELATIONS (15)

Miller, Floyd C., Chairman; Allen, Bernethy, Buse, Carroll, Frayn, Gordon; Miller, C. J.; Mohr, Morris, Roderick, Schumann, Watson; Winberg, Andrew; Zent.

LICENSES (9)

Young, Chairman; Allen; Anderson, B. Roy; Mardesich, Rasmussen, Sandison, Stonecipher, Watson, Woodall.

LIQUOR CONTROL (15)

Vane, Chairman; Anderson, B. Roy; Bargreen, Bernethy, Buse, Callow, Hillyer, Holliday; Miller, C. C.; Miller, Floyd C.; Sisson; Smith, Ralph A.; Sprague, Young, Zent.

MEDICINE, DENTISTRY AND DRUGS (9)

King, Chairman; Adams, Ball, Comfort; Gallagher, Michael J.; Jones, Mrs. Vincent F.; O'Brien, Rasmussen, Roderick.

MEMORIALS (5)

Ball, Chairman; Carroll, Hoefel, Morris, McPherson.

MILITARY AND NAVAL AFFAIRS (9)

Bargreen, Chairman; Bernethy, Carmichael, Holliday, Kinnear; Miller, C. C.; O'Brien, Rhodes, Sandison.

MINES AND MINING (7)

Johnston, Chairman; Holliday, Pedersen, Rogers, Rosenberg, Vane, Young.

PARKS AND PLAYGROUNDS (7)

Wenberg, Oscar, Chairman; Boede, Callow, Hansen, Johnston; Jones, Mrs. Vincent F.; Smith, Ralph A.

PUBLIC UTILITIES (11)

Pedersen, Chairman; Blair; Brown, Vaughan; Coughlin, Kupka, Shadbolt, Shannon, Washington, Watson; Wenberg, Oscar; Winberg, Andrew.

RECLAMATION AND IRRIGATION (9)

Washington, Chairman; Bergevin; Jones, John R.; Olson, Raugust, Rogers, Schumann, Thompson; Wenberg, Oscar.

REVENUE AND TAXATION (21)

Olson, Chairman; Anderson, B. Roy; Blair, Callow, Carroll, Carty, Comfort, Coughlin, Eldridge, Farrington, Ford, Hallauer Hofmeister, Paulsen, Powell, Rhodes, Roderick, Shadbolt; Smith, Vernon A.; Sprague, Wyatt.

ROADS AND BRIDGES (29)

Hansen, Chairman; Beierlein, Vice-Chairman; Adams; Anderson, Eva; Bassett; Brown, Gordon J.; Brown, Henry A.; Carmichael, Cory, Dillard, Donohue, Gordon, Hillyer, Hoopingarner; Jones, John R.; Knoblauch, McPherson; Miller, C. C.; Pedersen, Rosenberg, Raugust, Ridgway; Smith, Ralph A.; Stonecipher, Testu, Washington, Wedekind; Wenberg, Oscar; Wilson.

RULES AND ORDERS (13)

Hodde, Chairman; Adams, Beierlein, Clark, Ford; Gallagher, Bernard J.; Kinnear, Rasmussen, Raugust, Ridgway, Schumann, Wedekind; Winberg, Andrew.

SOCIAL SECURITY (13)

Nunamaker, Chairman; Brown, Henry A.; Beierlein; Brown, Gordon J.; Comfort, Eldridge; Gallagher, Bernard J.; Jeffreys, McPherson, Raugust, Rhodes, Roderick, Smiley.

STATE GOVERNMENT (11)

Carty, Chairman; Allen, Eldridge, Ford, Foster; Gallagher, Michael J.; Kelley, Riley, Sisson, Testu, Vane.

STATE INSTITUTIONS (11)

Knoblauch, Chairman; Ball, Carty, Cory, Dillard, Hoopingarner; Jones, Mrs. Vincent F.; Kelley; Miller, Floyd C.; Rhodes, Sisson.

TRANSPORTATION (9)

Testu, Chairman; Bargreen; Brown, Gordon J.; Carroll, Foster, Morris, Sandison, Sisson; Smith, Vernon A.

VETERANS' AFFAIRS (13)

Hofmeister, Chairman; Carmichael; Gallagher, Bernard J.; Henderson, Johnston, Knoblauch, Kupka, Paulsen, Rosenberg, Sandison, Stonecipher, Wilson, Woodall.





OFFICERS OF THE HOUSE



THE SPEAKER
CHARLES W. HODDE



THE SERGEANT AT ARMS
VIC SKINNER



THE CHIEF CLERK
S. R. HOLCOMB



MEMBERS OF THE HOUSE OF REPRESENTATIVES



ADAMS, GEORGE N. (Democrat) Representative from the 24th District of Mason County, was born in Mason County in 1880. Attended the Indian Government grade school and was married on March 30th, 1903. He served on the draft board from 1939 to 1946; is a member of the Masons, Eastern Star, Amaranth and the Eagles. He is a stockman, 68 years of age and has one daughter, Georgia. He was first elected to the Legislature in 1932, is a member of the Congregational Church and his local address is Rt. 7, Box 114, phone 10-F-12.

COMMITTEE ASSIGNMENTS--*Banks & Banking; Fisheries; Medicine, Dentistry & Drugs; Roads & Bridges; Rules & Order.*

ALLEN, W. O. "BILL" (Democrat) Representative from the 3rd District of Spokane County, was born in Mountainair, New Mexico in 1908. Following his high school education he attended college for two years and spent two years of military training at West Point. He spent seven years in the U. S. Army, is a member of the Fraternal Order of Eagles. He is Catholic and belongs to the Knights of Columbus. Has two children, Helen age 17 and Joe age 8. This is his first term in the Legislature and his Olympia address is DeLuxe Motor Court, Tumwater.

COMMITTEE ASSIGNMENTS--*Appropriations; Aviation & Airports; Labor Relations; License; State Government.*



ANDERSON, B. ROY (Republican) Representative from the 36th District of King County, was born in Minneapolis, Minnesota in 1883 and is 65 years of age. He was first elected to the House in 1930 and has served six terms. In 1931 he was Chairman of the Claims and Auditing Committee, in 1933 of Banks and Banking, 1943 Corporations other than Municipal, 1947 Revenue and Taxation. He is a Custom House Broker. Consul of Republic of Venezuela and his home address is 1508 8th Avenue, West, Seattle. He was married August 27th, 1906 and has three sons, Webster B, age 39 years, Roy B, 33 years and Burroughs B, 29 years. He is a 32nd Degree Scottish Rite Mason and an Episcopalian. His local address is 1416 Columbia, phone 3245.

COMMITTEE ASSIGNMENTS--*Banks & Banking; License; Liquor Control; Revenue & Taxation.*

ANDERSON, EVA, (Republican) Representative from the 12th District of Chelan County, was born in Surprise, Nebraska, in 1889 and is 59 years of age. She holds B.A., M.A. and Ph.D. Degrees and was County Supt. of Schools of Douglas County. She is an Educator, Writer and Housewife. She was married in 1915 and is a Methodist, is affiliated with the Eastern Star, Soroptimist, A.A.U.W., American Association of Pen Women, Delta Kappa Gamma. Her home address is Box 156, Chelan, and her local address 1009 Franklin, phone 2-2223.

COMMITTEE ASSIGNMENTS--*Agriculture & Livestock; Colleges & Universities; Education & Libraries; Roads & Bridges.*



MEMBERS OF THE HOUSE OF REPRESENTATIVES



BALL, HOWARD T. (Republican) Representative from the 7th District of Spokane County; his second term, having been elected first in 1946. he was born in Globe Arizona in 1900 and is 48 years of age. He attended college for one year and owns and directs a funeral parlor. He is a member of the Elks, Masons, Kiwanis, Exchange, Toastmasters and the Chamber of Commerce. He was married in 1923 and in 1938, has a son Donald Bruce, age 21, a daughter Ardythe Wychoff 22 years and a son Howard Lindley, 9 years. He is a Methodist, residing at 2409 S. Jefferson, Spokane. Local address is 1529 Capitol Way.

COMMITTEE ASSIGNMENTS--*Memorials, CHAIRMAN; Engrossment & Enrollment; Game & Game Fish; Medicine, Dentistry & Drugs; State Institu-*

BARGREEN, HOWARD, (Democrat), Representative from the 38th District, Snohomish County, was born at Everett in 1906 and is 42 years of age. He was first elected to the Senate in 1940, serving 2 terms. In 1941 served as Chairman of the Commerce and Manufacturing Committee and in 1943 of Liquor Control, as in 1945. He is a graduate of the University of Washington and is a merchant in Everett. He is affiliated with the Elks, Mason, Redman, Sons of Norway, Yacht Club and Rotary. Was married in 1931 and has two daughters, Sharron age 15, Claudette age 6 and two sons, Tom age 11 and Howard age 4. He is a Presbyterian and resides at 2821 Rucker Avenue, Everett. His local address is the Olympic Motel.

COMMITTEE ASSIGNMENTS--*Military & Naval Affairs, CHAIRMAN; Appropriations; Liquor Control; Transportation.*



BASSETT, ARTHUR H. (Republican) Representative from the 26th District of Pierce County, was born at Barre, Mass., in 1877 and is 71 years of age. Graduated from High School and the University and is in general insurance business. Has served three terms in the House being first elected in 1942 and was Chairman of the Counties and County Boundaries Committee that year. Chairman of the Insurance Committee in 1947. He is a Mason, member of the Scottish Rite, Knights of Pythias and a Shriner. Was married October 9th, 1913 and has one son Henry L, age 34. He is a Presbyterian and resides at 1902 Prospect St., Tacoma, local address is 1519 Columbia, phone 6376.

COMMITTEE ASSIGNMENTS--*Education & Libraries; Elections; Insurance; Roads & Bridges.*

BEIERLEIN, W. J. (Democrat) Representative from the 30th District of King County, was born in North Dakota in 1891. He is married, has two children and in the men's clothing business in Auburn. He has served five regular sessions and one special session and was Chairman of the Transportation Committee in 1943 and 1945. He is a former member of the Seattle City Council and is now a member of the Auburn Kiwanis Club.

COMMITTEE ASSIGNMENTS--*Roads & Bridges, VICE-CHAIRMAN; Banks & Banking; Rules & Order; Social Security.*



MEMBERS OF THE HOUSE OF REPRESENTATIVES



BERGEVIN, ARTHUR (Democrat) Representative from the 11th District of Walla Walla County, was born at Lowden, Washington, in 1889 and is 59 years of age. He attended high school two years before graduating from Business College. He is a stock raiser and farmer residing at Lowden. He is a member of the Elks, Eagles, Knights of Columbus and the Catholic Church. He was married September 27th, 1916 and has four children, Artimesa age 32, Jeane age 29, Russell age 26 and Denise age 23. His local address is 1401 Eastside, phone 2-1292.

COMMITTEE ASSIGNMENTS--*Agriculture & Livestock; Education & Libraries; Game & Game Fish; Reclamation & Irrigation.*

BERNETHY, ROBERT (Democrat) Representative from the 39th District of Snohomish County, was born at Randall, Minn. in 1896 and is 52 years of age. First elected to the House in 1938, he has served six regular terms and one special session. In 1943 he was Chairman of the Re-Apportionment Committee and in 1945, Forestry and Logged off Lands, on which committee he will serve as Chairman in the 1949 Session. Was a member of his school board for three years, served in World War I, 8th Infantry, 8th Division, is a member of the Eagles, Veterans of Foreign Wars. Married July 2nd, 1920, he has four children, George age 27, Robert 25, Doris 23 and Bill 20. His home address is Monroe, Rt. 2 and his local address 2002 Capitol Way, phone 21445.

COMMITTEE ASSIGNMENTS--*Forestry, State Lands & Buildings, CHAIRMAN; Industrial Insurance; Labor Relations; Liquor Control; Military & Naval Affairs.*



BLAIR, ROBERT E. (Democrat) Representative from the 4th District of Spokane County, was born at Spokane in 1912 and is 36 years of age. Graduated from Stanford and Harvard Law School. Served in the U. S. Navy, member of the Elks, Veterans of Foreign Wars. He was married on Sept. 9, 1943 and has two children, Leslie age 4 and Lawrence age 2. He is an Episcopalian and resides at Liberty Lake, Spokane. His local address is 1915 Water St., phone 4820.

COMMITTEE ASSIGNMENTS--*Cities & Counties; Elections; Judiciary; Public Utilities; Revenue & Taxation.*

BOEDE, VIOLET P. (Democrat) Representative from the 40th District of San Juan County, was born at San Juan in 1892. She was first elected to the Legislature in 1934 and has served five regular sessions and one special session. In 1937 she was Chairment of the Engrossment Committ special session. In 1937 she was Chairmen of the Engrossment Committee and in 1943, 1945 and 1947 was Chairman of Fisheries. She is a member of the Grange, Rebekah Lodge, and served as State Committeewoman for ten years, also as County Chairman and Vice County Chairman of her County. She was married in 1910 and has two children, Conrad, 37 and Winfred 32 years of age. She resides at Olga and her local address is 1606 Columbia, phone 7975.

COMMITTEE ASSIGNMENTS--*Fisheries, CHAIRMAN; Appropriations; education & Libraries; Horticulture; Parks & Playgrounds.*



MEMBERS OF THE HOUSE OF REPRESENTATIVES



BROWN, GORDON JOSEPH (Democrat) Representative from the 29th District of Pierce County was born at Mankato, Minnesota, in 1904 and is 44 years of age. Following high school he attended Business College and is now a construction worker. Married May 10, 1933, he has one child, Myrna Claire age 12. He is a member of the Catholic Church and resides at 237 Farallone Ave., Tacoma. His local address is the Governor Hotel, phone 6622.

COMMITTEE ASSIGNMENTS--*Engrossment & Enrollment; Industrial Insurance; Roads & Bridges; Social Security; Transportation.*

BROWN, HENRY A. (Democrat) Representative from the 23rd District of Kitsap County; born at Poulsbo, Washington, in 1892 he is 56 years of age. He was first elected to the House in 1946 and for 1949 he will serve as Chairman on Industrial Insurance. He served for six years as Kitsap Commissioner, four years as Public Utility Commissioner and served on his school board for 17 years. Along with farming he is interested in Insurance, is a member of the M.W.A., Eagles and the Grange. He married in 1915 and has two children, Kathleen, 33 and James, 31 and one grandchild. He resides at Poulsbo and his local address is the Governor Hotel, phone 6622.

COMMITTEE ASSIGNMENTS--*Industrial Insurance, CHAIRMAN; Cities & Counties; Roads & Bridges; Social Security.*



BROWN, VAUGHAN (Democrat) Representative from the 42nd District of Whatcom County was born at Bellingham in 1893 and is 55 years of age. He holds an A.B. Degree from the University of California, is a graduate of the University of Washington and is an attorney. He served in the first World War from May 1917 until May 1918. He was Postmaster at Bellingham for five years, served on the Library Board and for eleven years was U. S. Referee of Bankruptcy. He married E. Floy Strong in 1946 and resides at 1004 16th St., Bellingham. Local address is 1010 Franklin St.. phone 5124.

COMMITTEE ASSIGNMENTS--*Claims, Auditing & Printing; Colleges & Universities; Elections; Judiciary; Public Utilities.*

BUSE, EDWARD A. (Democrat) Representative from the 24th District of Jefferson County, was born at Oregon City, Oregon, in 1912 and is 35 years of age. He is a high school graduate and is now working as a paper maker. He was a member of the National Guard in 1926-27 and 1928. Married in 1936, he has two children, Dennis age 10 and Richard age 5. He is a Protestant and resides at 918 Taxloe, Port Townsend. His local address is the Olympian Hotel, phone 4451.

COMMITTEE ASSIGNMENTS--*Elections; Forestry, State Lands & Buildings; Labor Relations; Liquor Control.*



MEMBERS OF THE HOUSE OF REPRESENTATIVES



CALLOW, A. L. (Democrat) Representative from the 21st District of Grays Harbor County, was born at Milwaukee, Wis., in 1869 and is 80 years of age. He has served four terms having been first elected in 1940. He attended Business College, Olympia Collegiate Institute and Normal College. He was City Clerk in Olympia, County Clerk of Thurston County, County Auditor, Thurston County Treasurer and School Director at Elma. He is a member of the Knights of Pythias, Odd Fellows, Rebekah, Eagles, Masons, O.E.S., Pythian Sisters, Kiwanis, Knife and Fork Club, and the Grange. He is married and has five children, Lewis, 54, Doris Whittier, 48, Ruth Jarvis, 31, Miriam Berry, 26, and Frances Kock, 24. He is a Unitarian and resides at 1009 W. Main St., Elma, his local address is 207 W. 4th, phone 4035.

COMMITTEE ASSIGNMENTS--*Claims, Auditing & Printing, CHAIRMAN; Cities & Counties; Liquor Control; Parks & Playgrounds; Revenue & Taxation.*

CARMICHAEL, WALLACE I. (Democrat) Representative from the 38th District of Snohomish County, was born in 1922 and is 26 years of age. He is a high school and business college graduate and is engaged in salesmanship. He served five years in the U. S. Army Air Force and is a member of the American Legion, Masons, Elks, Veterans of Foreign Wars. He lives in Everett where he is a member of the First Baptist Church. His home address is P. O. Box 736, Everett and his local address is the Olympian Hotel, phone 4451.

COMMITTEE ASSIGNMENTS--*Aviation & Airports; Engrossment & Enrollment; Military & Naval Affairs; Roads & Bridges; Veterans' Affairs.*



CARROLL, CHARLES M. (Democrat) Representative from the 33rd District of King County, was born at Boston, Mass., August 1, 1908 and is 40 years of age. He is Chairman of the Commerce and Industry Committee. A high school graduate he is now a Union Official. He was married in 1934 and has three children, Michael age 13, Patricia age 9, and Terrance age 4. He is a member of the Catholic Church and resides at 1919 30th Avenue S, Seattle. His local address is 215 W. 20th, phone 5777.

COMMITTEE ASSIGNMENTS--*Commerce & Manufacturing, CHAIRMAN; Labor Relations; Memorials; Revenue & Taxation; Transportation.*

CARTY, W. E. (Democrat) Representative from the 17th District of Clark County, was born at Ridgefield in 1894 and is 54 years of age. He was first elected to the House in 1932 and served six regular terms and one special session. He was Chairman of the Dairy and Livestock Committee during the 1935 and 1945 Sessions and Chairman of the Agriculture Committee in 1939. He was a member of the Agriculture and Livestock, Horticulture, Revenue and Taxation, State Institutions and Veterans' Affairs Committees in 1947. He is a rancher, married and living at Rt. 1, Ridgefield. His local address is 1519 Columbia St.

COMMITTEE ASSIGNMENTS--*State Government, CHAIRMAN; Agriculture & Livestock; Education & Libraries; Revenue & Taxation; State Institutions.*



MEMBERS OF THE HOUSE OF REPRESENTATIVES

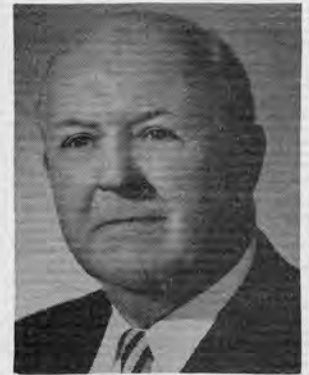


COMFORT, A. B. (Republican) Representative from the 26th District of Pierce County, was born in South Dakota, in 1884 and is 64 years of age. He was first elected to the House in 1942 and served three regular terms and one special session. He was Chairman of the Industrial Insurance Committee in 1947. He holds an A.B. and LL.B. Degree. He is a member of the Masons and Elks. He was Prosecuting Attorney, Administrator, W.E.R.A., 1933 to 1935. He was married August 12th, 1914 and has five children, Arthur 33, Seanne 29, Robert 24, John 21, Patrick 18. He resides at 3615 N. 33rd, Tacoma and his local address is 200 Maple Park, phone 3058.

COMMITTEE ASSIGNMENTS--*Engrossment & Enrollment, CHAIRMAN; Industrial Insurance; Medicine, Dentistry & Drugs; Revenue & Taxation; Social Security.*

CORY, ARTHUR S. (Republican) Representative from the 20th District of Lewis County, was born at Eagle, Wis. in 1880 and is 68 years of age. He was first elected to the House in 1921, serving six terms. In 1931 he was Chairman of Transportation other than automotive, in 1943 and 1947, Chairman of State Institutions and of Interim Committee on State Institutions in 1948. He is a graduate of Dakota Wesleyan University, A.B. Degree, 1901. Served as City Treasurer of Chehalis, Chehalis Board of Education and is now President of the Lewis County Savings and Loan Assn. He is a member of the Eagles, Masons, Affi Temple, Life member of the Chamber of Commerce, Kiwanis Club. He was married in 1903 and has two children, Mrs. Velva K. Broeren and Mrs. Jean Olson. He is a Methodist and resides at 1070 Washington Ave, Chehalis, phone 106 M.

COMMITTEE ASSIGNMENTS--*Banks & Banking; Insurance; Roads & Bridges; State Institutions.*



COUGHLIN, PAUL (Democrat) Representative from the 44th District of King County, was born at Ellensburg, Washington, in 1904 and is 44 years of age. He graduated from the University of Washington with an A.B. Degree and has an LL.B. Degree from Harvard Law School. He is an attorney and was married on July 15, 1933. He has two children, Alice age 8 and Denis age 6. He resides at 3747 Commodore Way, Seattle and his local address is the Olympian Hotel, phone 4451.

COMMITTEE ASSIGNMENTS--*Fisheries; Judiciary; Public Utilities; Revenue & Taxation.*

DILLARD, JAMES P. (Democrat) Representative from the 7th District of Spokane County, was born at Spokane in 1921 and is 27 years of age. He is a University graduate, has had three years at Law School and is the owner of Attorney's Service Bureau. He served in the United States Marine Corps from 1941 until 1945 and spent thirty months overseas. He is Chairman of the Aviation and Airports Committee for the 1949 Session. Was married April 30, 1943 and resides at 1134 West 8th, Spokane; his local address is 1915 Water Street, phone 4820.

COMMITTEE ASSIGNMENTS--*Aviation & Airports, CHAIRMAN; Banks & Banking; Judiciary; Roads & Bridges; State Institutions.*



MEMBERS OF THE HOUSE OF REPRESENTATIVES



DONOHUE, DEWEY C. (Democrat) Representative from the 10th District of Columbia County, was born in Columbia County in 1897 and is 51 years of age. He is one of the Columbia County Commissioners and is a School Board Director. He attended high school and business college and is now a farmer and stockman. He is a member of the Elks, Masons and the Grange. Married Dec. 15, 1921, he has five children, Hubert 27, Janis 23, Sharon 21, Patrick 20 and Duryla 15. He resides at Dayton and his local address is Lodoro Motel.

COMMITTEE ASSIGNMENTS--*Cities & Counties; Claims, Auditing & Printing; Education & Libraries; Roads & Bridges.*

ELDRIDGE, WESLEY (Republican) Representative from the 32nd District of King County, was born at Buffalo, N. Y., in 1903 and is 45 years of age. He was first elected to the House in 1946 and has served two terms; was Chairman of Parks and Playgrounds in 1947. He was educated at the University of Washington and Whitman College. He is associated with Frozen Foods Processing and Realty Developments. He is a member of the Washington Athletic Club; spent 3½ years in the service during World War II. He was married in 1945, is a Baptist and resides at 818 N. 43rd., Seattle. His local address is the Governor Hotel, phone 6622.

COMMITTEE ASSIGNMENTS--*Colleges & Universities; Elections; Revenue & Taxation; Social Security; State Government.*



FARRINGTON, CLAYTON (Democrat) Representative from the 22nd District of Thurston County, was born at Ottumwa, Iowa, in 1899 and is 49 years of age. He is a graduate of the University of Montana with an A.B. Degree in 1923; M.A., 1943. He is a history teacher in the Olympia High School. He was for 12 years in the National Guard and served in World War II in the Army, being a member of the American Legion. He was married on Dec. 22, 1923 and has two children, Mary Margaret 24 and Sam 13. He is a member of the Baptist Church and resides at 517 East 14th Street, Olympia, phone 6829.

COMMITTEE ASSIGNMENTS--*Education & Libraries; Engrossment & Enrollment; Fisheries; Industrial Insurance; Revenue & Taxation.*

FORD, ROBERT M. (Democrat) Representative from the 23rd District of Kitsap County, was born at New Rochelle, N. Y., in 1911 and is 37 years of age. He was first elected to the House in 1940, again in 1944, 1946 and 1948. In 1945 he served as Chairman of Public Morals. He served in the Navy in World War II and is now attending the University of Washington. He was married Oct. 27th, 1932 and has two children, Robert 14 and Linda 12 years old. His home is at Bremerton, P. O. Box 103 and his local address is 114 W. 15th, Olympia.

COMMITTEE ASSIGNMENTS--*Education & Libraries; Insurance; Revenue & Taxation; Rules & Order; State Government.*



MEMBERS OF THE HOUSE OF REPRESENTATIVES



FORSHEE, CHESTER D. (Republican) Representative from the 44th District of King County, was born in Chicago, Illinois, in 1909 and is 39 years of age. He graduated from Purdue University and is now associated in Real Estate and Insurance Brokerage. He is a member of the Ballard Lions Club and of the First Christian Church of Seattle. He resides at 8040 15th Avenue N. W., Seattle and his local address is 2307 Pacific Avenue, phone 5222.

COMMITTEE ASSIGNMENTS--*Cities & Counties; Commerce & Manufacturing; Fisheries; Insurance.*

FOSTER, F. STUART (Republican) Representative from the 14th District of Yakima County, was born at Rossville, Georgia, in 1907 and he is 41 years of age. He is a graduate of Willamette University, receiving his LL.B. in 1935. He was first elected to the House in 1940 and is serving his fifth term. In 1943 he was Chairman of the State Library Committee and in 1947 Chairman of Liquor Control. He is an attorney and is affiliated with the Optimist International. He was married May 17, 1937 and has three children, Marvin, age 11, Edward, 8 and Nadine age 6. He is a member of the First Methodist Church of Yakima and resides at Rt. 2, Selah. His local address is 117 West 24th Street, phone 5728.

COMMITTEE ASSIGNMENTS--*Education & Libraries, CHAIRMAN; Judiciary; State Government; Transportation.*



FRAYN, R. MORT (Republican) Representative from the 43rd District of King County, was born at Foulkton, S. D. in 1906 and is 42 years of age. Received his B.A. Degree from the University of Washington in 1927 and is affiliated with Phi Delta Theta. Was first elected to serve in the House in 1946. He is married and has two children, Suzanne age 16 and Robert age 13. He is a member of the Congregational Church and resides at 2622 Boyleston N, Seattle. His local address is 2029 East Bay Drive, phone 5050.

COMMITTEE ASSIGNMENTS--*Appropriations; Claims, Auditing & Printing; Colleges & Universities; Labor Relations.*

GALLAGHER, BERNARD J. (Democrat) Representative from the 3rd District of Spokane County, was born at Prosser, Washington, in 1912 and is 37 years of age. He is a graduate of Gonzaga Law School at Spokane and is an attorney. He served in the U. S. Army from 1943 to 1946. He is a member of the Catholic Church, the Knights of Columbus and the Elks. He was married on Aug. 22, 1947 and has a son Bernard 5 months old. He resides at 418 E. Liberty St. in Spokane and his local address is 221 20th West, Olympia.

COMMITTEE ASSIGNMENTS--*Appropriations; Judiciary; Rules & Order; Social Security; Veterans' Affairs.*



MEMBERS OF THE HOUSE OF REPRESENTATIVES



GALLAGHER, MICHAEL J. (Democrat) Representative from the 45th District of King County, was born at Indianapolis, Indiana, in 1911 and is 37 years of age. He was first elected to the House in 1942 and then to the Senate in 1945 and served as Chairman of the Constitution, Elections & Apportionment Committee. He attended high school and business college and is a Safety Engineer. He is a Catholic and was married in 1937. His Seattle address is 8045 Burke Avenue and local address is the Governor Hotel, phone 6622.

COMMITTEE ASSIGNMENTS--*Elections, CHAIRMAN; Appropriations; Medicine, Dentistry & Drugs; State Government.*

GORDON, J. CHESTER (Republican) Representative from the 9th District of Whitman County, was born at Lacrosse in 1909 and is 39 years of age. He is President of the Washington Young Republican Federation and is affiliated with the Elks and the Masons. He is a farmer residing at Lacrosse. He was married May 26, 1932 and has three children, Laurie Jo age 13, Nancy Lynne, 12 and Timothy age 4. He is a Methodist and his local address is 2513 Washington St, phone 7288.

COMMITTEE ASSIGNMENTS--*Agriculture & Livestock; Education & Libraries; Labor Relations; Roads & Bridges.*



HALLAUER, WILBUR G. (Democrat) Representative from the 1st District of Okanogan County, was born at Webster, N. Y, in 1914 and is 34 years old. He is the manager of a fruit processing plant at Oroville and is a City Councilman. He is a University of Washington graduate and this is his first term in the House. He was married in 1942 and has one daughter, Merry Elizabeth who is three months old. He is a member of the Catholic Church and resides at Oroville. His local address is the lodoro Motel.

COMMITTEE ASSIGNMENTS--*Horticulture, CHAIRMAN; Aviation & Airports; Game & Game Fish; Revenue & Taxation.*

HANSEN, JULIA BUTLER (Democrat) Representative from the 18th District of Wahkiakum County, was born at Portland, Oregon, in 1907 and she is 41 years of age. She was first elected to the House in 1938 and has served six terms. In 1939 she was Chairman of the Elections Committee; in 1941-43 and 45, Chairman of Education and for 1949 is Chairman of Roads and Bridges. Mrs. Hansen received her A.B. Degree in 1930 from the University of Washington. She served on the City Council at Cathlamet for six years. A housewife and writer, she was married in 1939 and has one son, David Kimball age two and one half. Her local address is 1517 Columbia, phone 6625.

COMMITTEE ASSIGNMENTS--*Roads & Bridges, CHAIRMAN; Education & Libraries; Harbors, Waterways & Flood Control; Parks & Playgrounds.*



MEMBERS OF THE HOUSE OF REPRESENTATIVES



HENDERSON, EDWIN A. (Democrat) Representative from the 22nd District of Thurston County was born at Olympia in 1883 and is 65 years of age. He graduated from high school and attended college for two years. He was associated with the Department of Justice, F.B.I. in the Seattle office in 1917-18 and 1919. He served with the army in the Philippines from 1899 to 1901. He is affiliated with V.F.W., U.S.W.V., Elks and the Poggie Club. He is a widower with two sons, William and Alfred. He is a member of the Congregational Church and resides at 1902 East 4th, phone 6179.

COMMITTEE ASSIGNMENTS--*Appropriations; Forestry, State Lands & Buildings; Game & Game Fish; Veterans' Affairs.*

HILLYER, ALFRED (Republican) Representative from the 15th District of Yakima County, was born at Portsmouth, England in 1884 and is 65 years of age. He was first elected to the House in 1944 and has served three terms. He has a public school and night school education and has held office as County Commissioner of Yakima County and served on the City Council at Sunnyside. He was Chairman of Civilian Defense and of the Bond Drive during World War II and is affiliated with the Rotary Club, Elks and Boy Scouts. He was married in 1912 and has two sons, Edwin, 33 and Virgil 30. He resides at Sunnyside where he is publisher of the "Sunnyside Sun." His local address is 2015 Columbia Street, phone 4983.

COMMITTEE ASSIGNMENTS--*Claims, Auditing & Printing; Horticulture; Liquor Control; Roads & Bridges.*



HODDE, CHARLES W. (Democrat) Representative from the 2nd District of Stevens County, was born in Missouri, in 1906 and is 42 years of age. Was first elected to the House in 1936 and has served four terms. In 1943 he was Chairman of the Revenue and Taxation Committee serving in the same capacity in 1945. He is Speaker of the House. He received a high school and correspondence school education and is a farmer. He belongs to the Grange and the M.W.A. and the Methodist Church. He was married in 1933 and has three children, Dorothy 14, John 11, and Mary age 6. He resides at Colville and his local address is 1118 Franklin Street, phone 4461.

COMMITTEE ASSIGNMENTS--*Rules & Order, CHAIRMAN.*

HOEFEL, DAVID (Republican) Representative from the 8th District of Adams County, was born in Russia in 1887 and is 61 years of age. He was elected to the House in 1944 and has served two terms. He has a grade school and business college education and is retired. He is a member of the Lions and the Chamber of Commerce. He has served as Councilman and Mayor of Ritzville where he now resides at 209 W. 6th. He was married in 1916 and has two children, Walter 29 and Marian 26. He is a member of the Congregational church and his local address is the Governor Hotel, phone 6622.

COMMITTEE ASSIGNMENTS--*Agriculture & Livestock; Appropriations, Forestry, State Lands & Buildings; Game & Game Fish; Memorials.*



MEMBERS OF THE HOUSE OF REPRESENTATIVES



HOFMEISTER, LOUIS E. (Democrat) Representative from the 30th District of King County, a native of Washington, was born in 1893 and is 55 years of age. Was first elected to the House in 1942 and has served three terms. He served as City Councilman of Enumclaw and is affiliated with the Veterans of Foreign Wars, American Legion, Loyal Order of Moose and the Eagles. He was married Sept. 26, 1927 and resides at 1777 McHugh Avenue, Enumclaw. His local address is the Olympian Hotel, phone 4451.

COMMITTEE ASSIGNMENTS--*Veterans' Affairs, CHAIRMAN; Agriculture & Livestock; Aviation & Airports; Revenue & Taxation.*

HOLLIDAY, MARK V. (Democrat) Representative from the 17th District of Clark County, was born at Park City, Colorado, in 1905 and is 43 years of age. He graduated from high school and received some college training and is associated with the Crown Zellerbach Corporation at Camas. He is a member of the Pulp and Sulphite Union and Masonic Lodge. He was married in 1944 and has two children, Jack R. Beeks 21 and Larry Beeks 14. He is a Methodist and resides at 604 N.W. Utah, Camas. His local address is 204 Maple Park, phone 4533.

COMMITTEE ASSIGNMENTS--*Education & Libraries; Industrial Insurance; Liquor Control; Military & Naval Affairs; Mines & Mining.*



HOOPINGARTNER, RUSSELL T. (Democrat) Representative from the 5th District of Spokane County, was born at Plainville, Indiana, in 1894 and is 54 years of age. He received a high school education and is engaged in raising livestock and farming. He has served as a Democratic Precinct Committeeman. He is a member of the Methodist Church and was married on May 5, 1922. He resides at Cheney and his local address is the Holly Motel, phone 5718.

COMMITTEE ASSIGNMENTS--*Agriculture & Livestock; Colleges & Universities; Game & Game Fish; Roads & Bridges; State Institutions.*

JEFFREYS, SIDNEY S. (Republican) Representative from the 10th District, Garfield County, was born at Pomeroy, in 1896 and is 53 years of age. He was first elected to the House in 1944 and has served two terms. He received a high school education and is now a farmer. He has been Chairman of the County War Board and Chairman of the Republican Party. He is a mason, member of the Eastern Star, Knights of Pythias and the Grange. Married in 1916, he has two children, Burton 32 and Marjorie 28. He is a member of the Christian Church and resides at Pomeroy. His local address is 1220 Jefferson St.

COMMITTEE ASSIGNMENTS--*Agriculture & Livestock; Appropriations; Forestry, State Lands & Buildings; Social Security.*



MEMBERS OF THE HOUSE OF REPRESENTATIVES



JOHNSTON, ELMER E. (Republican) Representative from the 6th District of Spokane County, was born at Oksdale, Washington, in 1898 and is fifty years of age. He was first elected to the House in 1946 and served as Chairman of the Mines and Mining Committee. He is a college graduate having received his LL.B and LL.M. Degree and is an attorney. He served in the first World War in the Infantry and is a member of the Elks and the Knights of Columbus and is a member of the Catholic Church. He married in 1929 and has two children, Joan 16 and Ned age 13. He resides at 714 W. 14th, Spokane and is staying at the Olympian Hotel, phone 4451.

COMMITTEE ASSIGNMENTS--*Mines & Mining; CHAIRMAN; Industrial Insurance; Judiciary; Parks & Playgrounds; Veterans' Affairs.*

JONES, JOHN R. (Democrat) Representative from the 1st District from Douglas County, was born at Lyons, Nebraska, in 1877 and is 78 years of age. He was first elected to the House in 1922 and has served in eleven sessions. In 1927 he was Chairman of the Horticulture Committee, in 1933, Revenue and Taxation; 1937, Agriculture; 1939, Revenue and Taxation and in 1941 and 1949, Agriculture. He has a high school education, is a farmer and has served as County Commissioner and mayor of Waterville. He is a member of the Grange and I.O.O.F. Married on Jan. 12, 1904 he has six children, Willis 42, Victor 39, Roland 36, Ruth 38, Ida May 33, and Mary 31. He is a member of the Christian Church and resides at Waterville. His local address is 1719 Water, phone 22928.

COMMITTEE ASSIGNMENTS--*Agriculture & Livestock, CHAIRMAN; Claims, Auditing & Printing; Reclamation & Irrigation; Roads & Bridges.*



JONES, MRS. VINCENT F. (Republican) Representative from the 46th District from King County, was born at St. Helena, California, in 1900 and is 49 years of age. She is a graduate of Washington Central College of Education and is affiliated with the Women's Federated Club, P.T.A., Congregational Women's Church Group, Music and Art Group. She was married in 1923 and has two children, Lyle, 24 and Virginia, 19. She resides at 3021 E. 135th, Seattle and her local address is 219 Maple Park, phone 4329.

COMMITTEE ASSIGNMENTS--*Education & Libraries; Medicine, Dentistry & Drugs; Parks & Playgrounds; State Institutions.*

KELLEY, GRACE (Democrat) Representative from the 21st District from Grays Harbor County was born at Niagara, North Dakota, in 1894 and she is fifty five years of age. She is a graduate nurse and has had three years of Normal school. She is in the real estate business and is a former member of the Aberdeen City Council. She is a member of the Catholic Church and not married. She lives at 106 S. "G" St., Aberdeen and her local address is 1902 E. 4th Avenue.

COMMITTEE ASSIGNMENTS--*Elections; Industrial Insurance; State Government; State Institutions.*



MEMBERS OF THE HOUSE OF REPRESENTATIVES



KING, CHET (Democrat) Representative from the 19th District of Pacific County, was born at Doty, Washington, December 4, 1901 and is 47 years of age. He is a high school graduate and is now working as a woodsman. First elected to the House in 1944, he has served two sessions. He has had three years peacetime service with the U. S. Navy and is a member of the Eagles, Elks and International Woodworkers of America. Married August 12, 1922, he has three children, Billye Joe 24, Sarah Elizabeth 22 and Norma Lee 18. His home address is P. O. Box 283, Raymond and his local address is 1517 Capitol Way.

COMMITTEE ASSIGNMENTS--*Medicine, Dentistry & Drugs, CHAIRMAN; Engrossment & Enrollment; Fisheries; Forestry, State Lands & Buildings; Industrial Insurance.*

KINNEAR, GEORGE C. (Republican) Representative from the 36th District of King County, was born in Seattle, in 1910 and is 38 years of age. He was first elected to the House in 1938 and has served four terms. In 1947 he was Chairman of the Military and Naval Affairs Committee. He is a graduate of the University of Washington, receiving his A.B. Degree in 1931, LL.B in 1934 and is an attorney. He served in the Navy for four years. He is an Episcopalian, is married and has two children, George age 8 and Grant age 1½. His home address is 819 Queen Anne Avenue, Seattle and his local address is 1416 Columbia, phone 3245.

COMMITTEE ASSIGNMENTS--*Appropriations; Commerce & Manufacturing; Judiciary; Military & Naval Affairs; Rules & Order.*



KNOBLAUCH, REUBEN A. (Democrat) Representative from the 25th District from Pierce County, was born at Sumner, Washington, in 1914 and is 34 years of age. He was first elected to the House in 1946 and again in 1948. He is serving as Chairman of Public Institutions during the present session. He is a high school graduate and is a farmer. He spent four years in the U. S. Army during World War II, three of those years overseas. He is a Catholic and a member of the Grange, Knights of Columbus, Eagles, American Legion and V.F.W. He has held the position of Precinct Committeeman and District Chairman and resides at 317 Wahle Rd., Sumner. His local address is 210 Maple Park, phone 5033.

COMMITTEE ASSIGNMENTS--*State Institutions, CHAIRMAN; Agriculture & Livestock; Education & Libraries; Roads & Bridges; Veterans' Affairs.*

KUPKA, GEORGE W. (Democrat) Representative from the 27th District of Pierce County, was born at South Prairie, Washington, in 1912 and is 36 years of age. Now serving his first term in the House. He received a high school education and is a Jewelryman. He served in the Navy during World War II and is a member of the Eagles and Amvets. He is a member of the Catholic Church and resides at 801 S. "G" St., Tacoma and his local address is at 1017 Capitol Way, phone 6811.

COMMITTEE ASSIGNMENTS--*Cities & Counties; Commerce & Manufacturing; Harbors, Waterways & Flood Control; Public Utilities; Veterans' Affairs.*



MEMBERS OF THE HOUSE OF REPRESENTATIVES



LESTER, JOE F. (Republican) Representative from the 12th District of Chelan County, was born in Iowa in 1890 and is 59 years of age. Mr. Lester was appointed to fill the vacancy of Jack Rogers who was appointed Director of Conservation and Development. He served as County Commissioner for 6 years and on the school board for 12. He is a graduate of Washington State College, D.V.M. and B.S., and is a farmer and Veterinarian. He served in World War I and is a member of the Masons and Eagles. Married in 1918, he has four children, William 28, Joe F. 25, Donald 21 and Mary Jo 15. He is a Presbyterian and resides on 5th Street in Wenatchee. His local address is the Olympian Hotel, phone 4451.

COMMITTEE ASSIGNMENTS--*Cities and Counties; Forestry, State Lands and Buildings; Horticulture; Mines and Mining; Reclamation and Irrigation.*

MARDESICH, TONY P. (Democrat) Representative from the 38th District, of Snohomish County, was born at San Pedro, California, in 1919 and is 30 years of age. This is his first session in the House. He is a graduate of the University of Washington, is an attorney and is affiliated with Phi Delta Phi. He was a lieutenant in the U. S. Navy, World War II and is now doing commercial fishing. A member of the Catholic Church and resides at 1821 Grand Ave., Everett; his local address is the Olympian Hotel, phone 4451.

COMMITTEE ASSIGNMENTS--*Harbors, Waterways & Flood Control, CHAIRMAN; Appropriations; Judiciary; License.*



McPHERSON, A. B. (Democrat) Representative from the 17th District from Clark County, was born at Franklin, Tennessee, in 1866 and is 82 years of age. He is a retired contractor and builder. Now serving his first term in the House he was formerly a constable in Vancouver from 1935 to 1939. He is a life member of Indian Consistory McAlester, Oklahoma. Married in 1886, he has six children. He is a member of the Christian Church and the Masonic Lodge and resides at 3406 "R" Street, Vancouver. His local address is 1066 Columbia Street, phone 22895.

COMMITTEE ASSIGNMENTS--*Elections; Harbors, Waterways & Flood Control; Memorials; Roads & Bridges; Social Security.*

MILLER, C. C. "CY" (Democrat) Representative from the 16th District from Benton County, was born at Blacklick, Penn., in 1902 and is 46 years of age. A high school graduate, he is a farmer and is a member of the American Legion and the I.O.O.F. Lodge. He is a Protestant, is married and resides at 102 Bartlett Road, Kennewick. His local address is the Governor Hotel, phone 6622.

COMMITTEE ASSIGNMENTS--*Agriculture & Livestock; Elections; Liquor Control; Military & Naval Affairs; Roads & Bridges.*



MEMBERS OF THE HOUSE OF REPRESENTATIVES



MILLER, CLYDE JAMES (Democrat) Representative from the 18th District from Cowlitz County, was born at Malcom, Iowa, in 1889 and is 59 years of age. He is a high school graduate and is employed as a stevedore. He is a member of the Elks, Masons and I.L.W.U. and is a Democratic Precinct Committeeman. Married, and he has one daughter, Juanita Miller McNeill. He is a Protestant and resides at Kelso. His local address is 1719 Water St., phone 22928.

COMMITTEE ASSIGNMENTS--*Fisheries; Game & Game Fish; Harbors, Waterways & Flood Control; Labor Relations.*

MILLER, FLOYD C. (Democrat) Representative from the 45th District from King County, was born at Seattle in 1902 and is 47 years of age. He was first elected to the House in 1937 and has served three terms. In 1945 he was Chairman of the Labor Relations Committee in which capacity he is serving again this session. He is a high school graduate, a contractor and builder. A Methodist, he is married and has one son, Floyd age 19. He resides at 2303 N. 62nd St., Seattle and his local address is 2305 S. Columbia, phone 5092.

COMMITTEE ASSIGNMENTS--*Labor Relations, CHAIRMAN; Commerce & Manufacturing; Engrossment & Enrollment; Liquor Control; State Institutions.*



MOHR, CARL F. (Democrat) Representative from the 4th District of Spokane County, was born at Newport, N. Y., in 1901 and is 47 years of age. A graduate of Millwood high school of New York, he owns and manages Mohr's Valley Gardens Service and is in the Plant Protection Dept., Trentwood Rolling Mill. He served three years in the Army and is president of his local union, #338 U.S. A.-C 20. He is married and resides at Rt. 5, Spokane. His local address is 1701 Fourth, phone 3445.

COMMITTEE ASSIGNMENTS--*Game & Game Fish; Horticulture; Industrial Insurance; Labor Relations.*

MORRIS, R. E. "RAY" (Democrat) Representative from the 32nd District of King County, was born at Marceline, Missouri, in 1914 and is 34 years of age. He is a high school graduate; he is now an Electrical Foreman and a member of the Eagles. He is Protestant, is married and has one son, Daniel 3½ years of age. He resides at 4729 Roosevelt Way, Seattle and his local address is 215 W. 20th, phone 5777.

COMMITTEE ASSIGNMENTS--*Commerce & Manufacturing; Education & Libraries; Labor Relations; Memorials; Transportation.*



MEMBERS OF THE HOUSE OF REPRESENTATIVES



NEILL, MARSHALL A. (Republican) Representative from the 9th District of Whitman County, was born at Pullman, Washington, in 1914 and is 34 years of age. Appointed by Whitman County Commissioners to fill the vacancy left by Asa Clark, who was appointed to the Senate. He is City Attorney at Pullman, having received his B.A. at Washington State and his LL.B. Degree at the University of Idaho. He served in the Navy during World War II. He is a member of the Episcopal Church, the Masons, Elks and Knights of Pythias. Married in 1938, he has three children, Marjorie 7, Martha Ann 5 and Howard 4. He resides at 414 Dexter St., Pullman and his local address is the Governor Hotel, phone 6622.

COMMITTEE ASSIGNMENTS--*Appropriations; Aviation & Airports; Banks & Banking; Colleges & Universities.*

NUNAMAKER, HOMER O. (Democrat) Representative from the 42nd District of Whatcom County, was born in Illinois, in 1891 and is 58 years of age. He was first elected to the House in 1942 and has served two sessions and one special session. He is a grocer and a member of the Lions and the A.O.U.W. He is married and resides at 701 11th St.; Bellingham. His local address is 204 Maple Park, phone 4533.

COMMITTEE ASSIGNMENTS--*Social Security, CHAIRMAN; Aviation & Airports; Cities & Counties; Fisheries.*



O'BRIEN, JOHN L. (Democrat) Representative from the 33rd District of King County, was born at Seattle, in 1911 and is 37 years of age. He was first elected to the House in 1941 and has served four regular and a special session. In 1943 he was Chairman of the Public Morals Committee, in 1945 of Banks and Banking and for 1949 is serving as Chairman of Cities and Counties and Vice-Chairman of Appropriations. He is a graduate of the Western Institute of Professional Accounting, is a Certified Public Accountant and has done extension work at the University of Washington. He served in the United States Coast Guard and is a member of the Knights of Columbus, Washington Athletic Club and Rainier Business men's Club. He is Catholic and resides at 4209 Findley St., Seattle. His local address is the Olympian Hotel, phone 4451

COMMITTEE ASSIGNMENTS--*Cities & Counties, CHAIRMAN; Appropriations, VICE-CHAIRMAN; Judiciary; Medicine, Dentistry & Drugs; Military & Naval Affairs.*

OLSON, OLE H. (Democrat) Representative from the 16th District of Franklin County, was born in Rice County, Minn., in 1890 and is 58 years of age. He first served in the House in 1929 and is serving his third term. In 1931 he was Chairman of the Enrollment Committee and during the 1949 Session is Chairman of Revenue and Taxation. He was Chief Clerk of the House in the 1933 Session and served as State Printer from 1933 until 1941. He graduated from St. Olaf College in 1912 and is a retired newspaper publisher. He is a member of the Elks, Masons and Knights of Pythias. Was married in 1915 and has four children, Orville 32, Myrna Joe 29, Ruth 28 and Roger 26. He is a Congregationalist and resides at 904 Park St., Pasco. His local address is 423 S. Olympic Way, phone 5271.

COMMITTEE ASSIGNMENTS--*Revenue & Taxation, CHAIRMAN; Colleges & Universities; Forestry, state lands & Buildings; Reclamation & Irrigation.*



MEMBERS OF THE HOUSE OF REPRESENTATIVES



PAULSEN, ARTHUR R. (Democrat) Representative from the 28th District of Pierce County, was born at Tacoma, in 1916 and is 32 years of age. He was first elected to the House in 1946 and is serving his second term. He is a graduate of the University of Washington, with a B.A. and LL.B Degree and is an attorney. He served in the Navy from 1942 to 1946, and is a member of the Elks and the Eagles. Married in 1944, he has one daughter Carol Ann. Is a Methodist and resides at 224 S. 59th St., Tacoma. His local address is 209 Pacific Bldg.

COMMITTEE ASSIGNMENTS--*Judiciary*, CHAIRMAN; *Industrial Insurance; Revenue & Taxation; Veterans' Affairs.*

PEDERSEN, CHARLES A. (Republican) Representative from the 41st District of Whatcom County, was born in Minnesota in 1887 and is 61 years of age. He was first elected to the House in 1944 and at this, his third session, is Chairman of the Public Utilities Committee. He is a farmer and member of the Grange. He has been a Washington State Advisory Highway Commissioner, P.U.D. Commissioner and Township Supervisor. A member of the Baptist Church, he was married in 1916 and has two children, Karl 31 and Doris 21. He resides at 1112 Meridian Rd., Bellingham and his local address is 1123 W. 6th, phone 21352.

COMMITTEE ASSIGNMENTS--*Public Utilities*, CHAIRMAN; *Fisheries; Insurance; Mines & Mining; Roads & Bridges.*



POWELL, GEORGE V. (Republican) Representative from the 37th District of King County, was born at Seattle in 1910 and is 38 years of age. He was first elected to the House in 1946 and in 1947 served as Chairman of the Elections and Constitutional Revision Committee. He is a University of Washington Graduate, receiving an A.B. and LL.B. Degree and is an attorney. He served in the Navy during World War II. Married August 22, 1933, he has three children, Jane 12, George 10 and Lisa 7. He is a member of the Episcopalian Church and resides at 822 39th Ave, N., Seattle and his local address is the Governor Hotel, phone 6622.

COMMITTEE ASSIGNMENTS--*Colleges & Universities; Elections; Judiciary; Revenue & Taxation.*

RASMUSSEN, A. L. (Democrat) Representative from the 28th District of Pierce County, was born at Everett, Washington in 1909 and is 39 years of age. He was first elected to the House in 1944 and has served two terms. IN 1945 he was Chairman of the Cities and Counties Committee. He received a high school education, is a machinist and has acted in the capacity of school director. Married in 1940, he has three children, David 7, Alan 6, and Chris 4 years of age. He resides at 622 S. 35th, Tacoma and his phone is Ga. 4380.

COMMITTEE ASSIGNMENTS--*Fisheries; License; Medicine, Dentistry & Drugs; Rules & Order.*



MEMBERS OF THE HOUSE OF REPRESENTATIVES



RAUGUST, W. C. (Republican) Representative from the 8th District of Lincoln County, was born in Russia in 1895 and is 53 years of age. He was first elected to serve in the House in 1942 and again in 1944 and 1946. In 1947 he was Chairman of the Reclamation & Irrigation Committee. He attended local grade schools and business college and is associated in the grain, hardware and automobile business. He served in the Navy in World War I and is a member of the American Legion. Was married in 1919 and has five children, Trudy, Wilma, William, Jr., Elizabeth and Margaret. He is a Protestant and resides at Odessa. His local address is the Governor Hotel, phone 6622.

COMMITTEE ASSIGNMENTS--*Reclamation & Irrigation; Roads & Bridges; Rules & Order; Social Security.*

RHODES, G. FRANK (Democrat) Representative from the 27th District of Pierce County, was born at Wichita, Kansas, in 1881 and is 68 years of age. He received a high school education and is Deputy Treasurer of Pierce County and belongs to the Eagles and the Grange. He is a member of the First Methodist Church of Tacoma and he has three sons, George 45, Martin 42 and Gene 37. He resides at 608 Ainsworth, Tacoma and his local address is 1017 Capitol Way, phone 6811.

COMMITTEE ASSIGNMENTS--*Engrossment & Enrollment; Military & Naval Affairs; Revenue & Taxation; Social Security; State Institutions.*



RIDGWAY, EMMA ABBOTT (Democrat) Representative from the 40th District of Skagit and San Juan Counties, was born in Seattle, and was first elected to the House in 1944. In 1945 she was Chairman of the Colleges and Universities Committee. Received her B.A. Degree from the State College of Washington and her M.A. Degree at Columbia University. Belongs to the American Legion Auxiliary, P.E.O. Sisterhood, Alpha Chi Omega (Social Sorority), Pi Lambda Theta (honorary education), Phi Kappa Phi, an honorary scholastic. She has been Vice-Chairman of the Democratic State Central Committee for a number of years. Mrs. Ridgway is a theatre manager and resides in Sedro-Woolley. She has one son, Hugh Ralph Ridgway. Her local address is 812 Adams, phone 3551.

COMMITTEE ASSIGNMENTS--*Colleges & Universities; Education and Libraries; Roads & Bridges; Rules & Order.*

RILEY, EDWARD F. (Democrat) Representative from the 35th District of King County, was born in Seattle, in 1898 and is 50 years of age. He was first elected to the House in 1939 and has served for six regular and one special session. In 1939 he was Chairman of the Insurance Committee, in 1941 Chairman of Claims, Auditing and Printing, as in 1943. This Session he is Chairman of Appropriations. He also served as Speaker Pro-Tem in 1943. He has two years of college and is Vice-President and Sales Manager of a Seattle plumbing firm. He served in the Army in World War I and is a member of the Catholic Church, Knights of Columbus and Kiwanis. He has two sons, John 19 and Edward 16 and resides at 608 Spring St., Seattle. His local address is 2715 Capitol Way, phone 3957.

COMMITTEE ASSIGNMENTS--*Appropriations, CHAIRMAN; Colleges & Universities; Education & Libraries; State Government.*



MEMBERS OF THE HOUSE OF REPRESENTATIVES



RODERICK, DAVID M. (Democrat) Representative from the 35th District of King County, was born at Frederick, Maryland, in 1921 and is 27 years of age. He is a graduate of the University of Washington, with an A.B. Degree and is doing work toward a Master's Degree. He is affiliated with Phi Gamma Delta Fraternity. He served for three years in the Navy as a pilot during World War II and was married January 1, 1947. He resides at 901 Sixth Street, Seattle and his local address is 517 East 14th St., phone 6829.

COMMITTEE ASSIGNMENTS--*Labor Relations; Medicine, Dentistry & Drugs; Revenue & Taxation; Social Security.*

ROSENBERG, K. O. (Democrat) Representative from the 2nd District of Stevens County, was born in Spokane, Washington, in 1920 and is 28 years of age. He has a high school education and attended Navy Electronic schools. He now is engaged in Dairy Farming. He served in the Navy during World War II and is a member of the American Legion and the Grange. He was married in 1948 and resides at Addy, Washington. His local address is 110 East 11th, phone 9124.

COMMITTEE ASSIGNMENTS--*Agriculture & Livestock; Mines & Mining; Roads & Bridges; Veterans' Affairs.*



SANDISON, GORDON (Democrat) Representative from the 24th District of Clallam County, was born at Auburn, Washington, in 1920 and is 29 years of age. He is a College graduate with two years of graduate work. He is an insurance and real estate broker. He served in the U.S.M.C. in World War II and is a member of the V.F.W., D.A.V., American Legion, Reserve Officers Association and the Elks and Eagles. Married May 8, 1943, he has two children Gordon 3 and Colin 7 months. He is a Protestant and resides at Port Angeles, his local address is the Governor Hotel, phone 6622.

COMMITTEE ASSIGNMENTS--*Insurance, CHAIRMAN; License; Military & Naval Affairs; Transportation; Veterans' Affairs.*

SCHUMANN, O. R. (Republican) Representative from the 14th District of Yakima County, was born in Wisconsin and is 50 years of age. First elected to the House in 1938 and is now serving his sixth regular session. In the 1941 and 1943 sessions he was Chairman of the Judiciary Committee. He served as Yakima County Prosecuting Attorney for two terms and as an Assistant State Attorney General for two years. He is now a practicing attorney residing at 328 Miller, Yakima. He is married and his local address is 117 West 24th Avenue, phone 5728.

COMMITTEE ASSIGNMENTS--*Appropriations; Judiciary; Labor Relations; Reclamation & Irrigation; Rules & Order.*



MEMBERS OF THE HOUSE OF REPRESENTATIVES



SHADBOLT, LOOMIS J. (Republican) Representative from the 14th District of Yakima County, was born in Wisconsin in 1883 and is 65 years of age. He was first elected to the House in 1940 and is serving his 5th term. In 1947 he was Chairman of the Colleges and Universities Committee. He is a graduate of the University of Wisconsin College of Engineering and is now a fruit grower and an investment broker. He is a member of the Elks, Grange, Shrine, Grotto, Rotary. Married in 1909, he has one daughter. He is a Protestant and resides at 205 S. 30th, Yakima. His local address is the Governor Hotel, phone 6622.

COMMITTEE ASSIGNMENTS--*Colleges & Universities; Horticulture; Public Utilities; Revenue & Taxation.*

SHANNON, WILLIAM DAY (Republican) Representative from the 43rd District of King County, was born at Parkville, N. Y., in 1881 and is 67 years of age. He was first elected to the House in 1946 and in 1947 served as Chairman of Public Utilities. He served as King County Engineer. He is a graduate of the University of Michigan with a B.S. in Civil Engineering. He is at present a Consulting Civil Engineer and is a member of the Masons. Married Sept. 25, 1912, he has three children, William 35, Mary Elizabeth 32 and Patricia 23, he resides at 1802 Parkside Drive, Seattle and his local address is Apt. 357, Capitol Apts., phone 21430.

COMMITTEE ASSIGNMENTS--*Appropriations; Engrossment & Enrollment; Forestry, State Lands & Buildings; Harbors, Waterways & Flood Control; Public Utilities.*



SIMMONS, KENNETH H. (Democrat) Representative from the 25th District of Pierce County, was born in Tacoma, Washington, in 1900 and is 49 years of age. Was first elected to the House in 1936, serving as Chairman of Municipal Corporations in 1937 and during this Session as Chairman of the Game & Game Fish Committee. He served as mayor of Sumner for four terms, as Councilman for four terms, Utility Commissioner for one term and Justice of Peace for two. Now a resort owner and operator, he was in the Navy Reserve from 1917 to 1921. He is a Past President of F.O.E., a Grange Lecturer and member of the I.B.E.W. Union and American Federation of Teachers. Married in 1923, he has two children, Richard 23 and Ronald 13. He is a Baptist and resides at Bonney Lake, Pierce County. His local address is 1203 Adams, Phone 9010.

COMMITTEE ASSIGNMENTS--*Game & Game Fish, CHAIRMAN; Appropriations; Banks & Banking; Cities & Counties; Horticulture.*

SISSON, GRANT C. (Republican) Representative from the 40th District of Skagit County, was born at Padilla, Washington, in 1885 and is 63 years of age. He was first elected to the House in 1922 and has served six regular and three special sessions. In 1925 he was Chairman of Game and Game Fish, in 1933 of Education and in 1941 of Municipal Corporations other than First Class. He has a high school and business college education, is engaged in farming. He is a member of the Elks and Modern Woodman of America. A Baptist, he was married on April 14, 1909 and has two children, Darrell 38 and Miriam 34. He resides at Mt. Vernon and his local address is the Olympian Hotel, phone 4451.

COMMITTEE ASSIGNMENTS--*Game & Game Fish; Liquor Control; State Government; State Institutions; Transportation.*



MEMBERS OF THE HOUSE OF REPRESENTATIVES



SMILEY, REUBEN T. (Democrat) Representative from the 5th District of Spokane County, was born at Tekoa, Washington, in 1906 and is 42 years of age. He is a graduate of high school, the J. M. Perry Institute and Kinman Business University and is in the insurance business. Is a member of the United Steel Workers of America and International Association of Machinists. Married in 1940, he has two children, Beverly Ann 5 and Howard age 3. He is a Lutheran and resides at 407 East La Crosse, Spokane. His local address is Olympia Motor Court, phone 21911.

COMMITTEE ASSIGNMENTS-- *Appropriations; Industrial Insurance; Insurance; Social Security.*

SMITH, RALPH A. (Democrat) Representative from the 19th District of Pacific County, was born at Long Beach, Washington, in 1914 and is 34 years of age. He is a high school graduate and is engaged in newspaper circulation. He is a member of the Elks and Eagles. He was married in 1939 and has three children, Charlene 6, Roberta 5 and Jo-Anne 4 months. He is a Methodist and resides at Long Beach. His local address is the Olympian Hotel, phone 4451.

COMMITTEE ASSIGNMENTS-- *Forestry, State Lands & Buildings; Liquor Control; Parks & Playgrounds; Roads & Bridges.*



SMITH, VERNON A. (Republican) Representative from the 46th District of King County, was born at Seattle, Washington, in 1891 and is 57 years of age. He was first elected to the House in 1932 and has served 3 regular and one special session. In 1941 he was Chairman of the Harbors and Waterways Committee. A graduate of St. Martins College, Lacey, he is now Vice-President of Kenworth Motor Truck Corporation in Seattle. He served in World War I and is a member of Nile Temple Shrine. Married in 1921, he has three children, Mrs. George Stevens 23, Patricia 21 and Vernon 19. He belongs to the University Christian Church and resides at 4721-17th Ave. N. E., Seattle. His local address is the Governor Hotel, phone 6622.

COMMITTEE ASSIGNMENTS-- *Commerce & Manufacturing; Engrossment & Enrollment; Revenue & Taxation; Transportation.*

SPRAGUE, RAY W. (Republican) Representative from the 20th District from Lewis County, was born at Forest River, N. D., in 1888 and is 60 years of age. He was first elected to the House in 1946 and is serving his second term. He has a grade school and extension course education. He is a retired merchant, a member of the Masons, Royal Arch, and Kiwanis. Married in 1910, he has one daughter, Mrs. H. E. Gleason 37. He is a Presbyterian and resides at 701 N. Washington, Centralia. His local address is De Luxe Court, phone 4962.

COMMITTEE ASSIGNMENTS-- *Cities & Counties; Elections; Liquor Control; Revenue & Taxation.*



MEMBERS OF THE HOUSE OF REPRESENTATIVES



STONECIPHER, JAMES D. (Republican) Representative from the 11th District of Walla Walla County, was born at Waitsburg, in 1900 and is 49 years of age. From 1941 to 1947 he was County Commissioner of Walla Walla County. A graduate of Washington State College, he is a farmer and served in World War I. He is a member of the F.A.A.M., El Katif Shrine, I.O.O.F., Elks and Kiwanis. Married in 1919, he has two children, James 27 and Mrs. Laurence Broom 28. He is a member of the Central Christian Church and resides at Waitsburg. His local address is the Governor Hotel, phone 6622.

COMMITTEE ASSIGNMENTS--*Aviation & Airports; License; Roads & Bridges; Veterans' Affairs.*



SUTHERLAND, PATRICK D. (Democrat) Representative from the 37th District of King County, was born in Los Angeles, California, in 1922 and is 26 years of age. During the 1949 Session he is serving as the Chairman of the Banks and Banking Committee. He is an attorney and is a member of Phi Delta Theta and the Eagles. A member of the Catholic Church, he was married on Oct. 15, 1948. He resides at 1526 38th Ave., Seattle and his local address is 2005 Water Street.

COMMITTEE ASSIGNMENTS--*Banks & Banking, CHAIRMAN; Commerce & Manufacturing; Insurance; Judiciary.*



TESTU, JEANETTE (Democrat) Representative from the 34th District of King County, was born in Pierre, S. D. She is a Normal School graduate and is a former school teacher. She was first elected to the House in 1942 and during the 1949 Session is Chairman of the Transportation Committee. She is National Democratic Committee Woman from the State of Washington. Married in 1920, she has three children, Jeanne Marie 25, Joseph 24 and Geraldine 20. She resides at 2138 41st S.W., Seattle and her local address is the Olympian Hotel, phone 4451.

COMMITTEE ASSIGNMENTS--*Transportation, CHAIRMAN; Education & Libraries; Engrossment & Enrollment; Roads & Bridges; State Government.*



THOMPSON, GEORGE R. (Republican) Representative from the 20th District of Lewis County, was born in Ohio in 1889 and is 59 years of age. He was first elected to the House in 1942 and has served three sessions. In 1947 he was Chairman of the Education and Libraries Committee. He has an A.B. Degree from the College of Puget Sound, is Deputy Lewis County Treasurer and a member of the Masonic Lodge. Married in 1916, he has one daughter, Peggy Emma 26. He is a Methodist and resides at 1411 Adams St., Chehalis. His local address is DeLuxe Motel, phone 4962.

COMMITTEE ASSIGNMENTS--*Agriculture & Livestock; Appropriations; Education & Libraries; Engrossment & Enrollment; Reclamation & Irrigation.*





VANE, Z. A. (Democrat) Representative from the 29th District of Pierce County, was born in 1892 at Wausaubee, Wis., and is 56 years of age. First elected to the House in 1932, he has served seven regular and two special sessions. In 1945 he was Chairman of the Insurance Committee. He served in the first World War and is a member of the Elks, Knights of Columbus and Eagles. He attended both Normal School and College and now operates a finance business. He is a Catholic and was married in 1946. He resides at 6014 S. Warner, Tacoma and his local address is 1510 Water Street.

COMMITTEE ASSIGNMENTS--*Liquor Control, CHAIRMAN; Appropriations; Game & Game Fish; Mines & Mining; State Government.*

WASHINGTON, NAT (Democrat) Representative from the 13th District from Grant County, was born at Coulee City, Washington, in 1914 and is 34 years of age. He is a graduate of the University of Washington and is an attorney. From 1942 to 1946, he served with the Army Air Corps and is a member of the Masons and the Grange. He is an Episcopalian. Married in 1945, he has one son. He resides at Ephrata and his local address is 423 S. Olympic Way, phone 5271.

COMMITTEE ASSIGNMENTS--*Reclamation & Irrigation, CHAIRMAN; Colleges & Universities; Judiciary; Public Utilities; Roads & Bridges.*



WATSON, JIMMIE G. (Democrat) Representative from the 31st District of King County, was born at Oakdale, Washington, in 1907 and is 41 years of age. A high school graduate, he spent three years at Gonzaga University and is now an electrician. Married in 1934, he has two children, Jacquelyn 11 and Jeri Alene 6 years of age. He resides at 3911 Holden, Seattle and his local address is the DeLuxe Motel, phone 4962.

COMMITTEE ASSIGNMENTS--*Appropriations; Aviation & Airports; Labor Relations; License; Public Utilities.*

WEDEKIND, MAX (Democrat) Representative from the 34th District of King County, was born in San Francisco, California, in 1899 and is 49 years of age. First elected to the House in 1944, he is serving his fourth term. In 1945 he was Chairman of the Harbors and Waterways Committee. He attended the California School of Mechanical Arts and Mission College and has had three years of Business Administration. He is now a Labor Representative, a member of the Odd Fellows and Moose. Married in 1921, he has one daughter, Maxine Ruth, 25. He is a member of the West Seattle Christian Church and resides at 3729 40th Ave., S.W. Seattle. His local address is 1617 Capitol Way, phone 6916.

COMMITTEE ASSIGNMENTS--*Fisheries; Harbors, Waterways & Flood Control; Roads & Bridges; Rules & Order.*



MEMBERS OF THE HOUSE OF REPRESENTATIVES



WENBERG, OSCAR (Democrat) Representative from the 39th District of Snohomish County, was born at Willmar, Minn., in 1881 and is 67 years of age. Was first elected to the House in 1938 and served four terms. In 1941 he served as Chairman of Compensation & Fees for County and State Offices; in 1945, of Parks and Playgrounds and for this Session, is Chairman of Parks and Playgrounds. He is a Railroad Trainman and a member of the Grange. Married in 1911, he has two children, Marie Louise 33 and Johan 31. He resides at East Stanwood and his local address is the Olympian Hotel, phone 4451.

COMMITTEE ASSIGNMENTS--*Parks & Playgrounds, CHAIRMAN; Fisheries; Public Utilities; Reclamation & Irrigation; Roads & Bridges.*

WILSON, JOHN N. (Democrat) Representative from the 31st District of King County, was born at West Lebanon, New Hampshire, in 1891 and is 57 years of age. He was first elected to the House in 1932 and has served three terms. He was Chairman of the State Granted School Tide Lands from 1933 to 1935. He is a University of Washington graduate and now operates a book and stationery concession business in chain and department stores. He served in the first World War in the Navy Air Corps and is a Mason, Shriner, Arcanian, and member of the R.A.M. A Unitarian, he married in 1933 and has two children, Frank 25 and George 24. He lives at Mercer Island, Box 93 and his local address is 219 East 19th, phone 22165.

COMMITTEE ASSIGNMENTS--*Colleges & Universities, CHAIRMAN; Commerce & Manufacturing; Forestry, State Lands & Buildings; Roads & Bridges; Veterans' Affairs.*



WINBERG, ANDREW (Democrat) Representative from the 21st District of Grays Harbor County, was born at Nordfjardeid, Norway, in 1885 and is 63 years of age. First elected to the House in 1942, he has served three terms and one special session. In 1945 he was Chairman of Financial Institutions other than Banks. He was Democratic County Chairman from 1937 to 1948 and Chairman of the Nine County League from 1946 until 1948. He is a realtor, a member of the Odd Fellows, Loyal Order of Moose and Sons of Norway. Married in 1910, he has one son Andrew Marshall, 31. He is a Lutheran and resides at 110 West 3rd, Aberdeen. His local address is 1607 Capitol Way, phone 6533.

COMMITTEE ASSIGNMENTS--*Banks & Banking; Fisheries; Labor Relations; Public Utilities; Rules & Order.*

WOODALL, PERRY B. (Republican) Representative from the 15th District of Yakima County, was born in Buena, Washington, in 1912. He is a graduate of the Yakima Valley Junior College and the University of Washington where he obtained his LL.B. Married in 1943, he has two children, Patricia Joy, 2½ years and Perri-Lou Marie, three months. An attorney, he has served five terms in the House. He was Chairman of Constitutional Revision in 1941 and of Corporations other than Municipal in 1943. He served in the Navy in World War II and is a member of the American Legion, Eagles and Grange. He is a Baptist. His address is P. O. Box 507, Toppenish and his local address is 117 West 24th, phone 5728.

COMMITTEE ASSIGNMENTS--*Agriculture & Livestock; Elections; Judiciary; License; Veterans' Affairs.*



MEMBERS OF THE HOUSE OF REPRESENTATIVES



WYATT, DAILY S. (Democrat) Representative from the 41st District of Whatcom County, was born at Cutler, Indiana, in 1889 and is 59 years of age. He has had a business college education and is a real estate broker. He is a member of the Masons, Eastern Star, Grange and Lions Club. Married in 1913 he has four children, D. Howard 33, Oliver 29, Ferel Zoe 26 and Lois 21. He resides at Ferndale and his local address is 116 E. 10th, phone 5098.

COMMITTEE ASSIGNMENTS--*Agriculture & Livestock; Elections; Engrossment & Enrollment; Insurance; Revenue & Taxation.*

YOUNG, R. C. "BRIGHAM" (Democrat) Representative from the 13th District of Kittitas County, was born at Wilksburg, Penn., in 1898 and is fifty years of age. He was first elected to the House in 1942 and has served four regular and one special session. In 1945 he was Chairman of the Mines and Mining Committee and for 1949 is Chairman of Licenses. He is a high school graduate and has one year of college. He was mayor of Cle Elum for six years and is a barber by trade. He served in World War I and is a member of the Elks, Eagles and Veterans of Foreign Wars. Married, he has a son Ross, age 20. He resides at 106 N. Maple, Ellensburg and his local address is 423 Olympic Way, phone 5271.

COMMITTEE ASSIGNMENTS--*License, CHAIRMAN; Agriculture & Livestock; Colleges & Universities; Liquor Control; Mines & Mining.*



ZENT, HAROLD (Republican) Representative from the 6th District of Spokane County, was born at Ritzville, Washington, in 1900 and is 48 years of age. He was first elected to the House in 1940 and has served five regular and one special session. In 1943 he was Chairman of Educational Institutions and in 1947, Chairman of the Labor Committee. He is a graduate of Washington State College and he is now employed by Associated Industries. He is a member of the Congregational Church and the Elks. Married in 1925, he has no children and resides at 1417 South Lincoln, Spokane. His local address is the Governor Hotel, phone 6622.

COMMITTEE ASSIGNMENTS--*Colleges & Universities; Industrial Insurance; Labor Relations; Liquor Control; Rules & Order.*



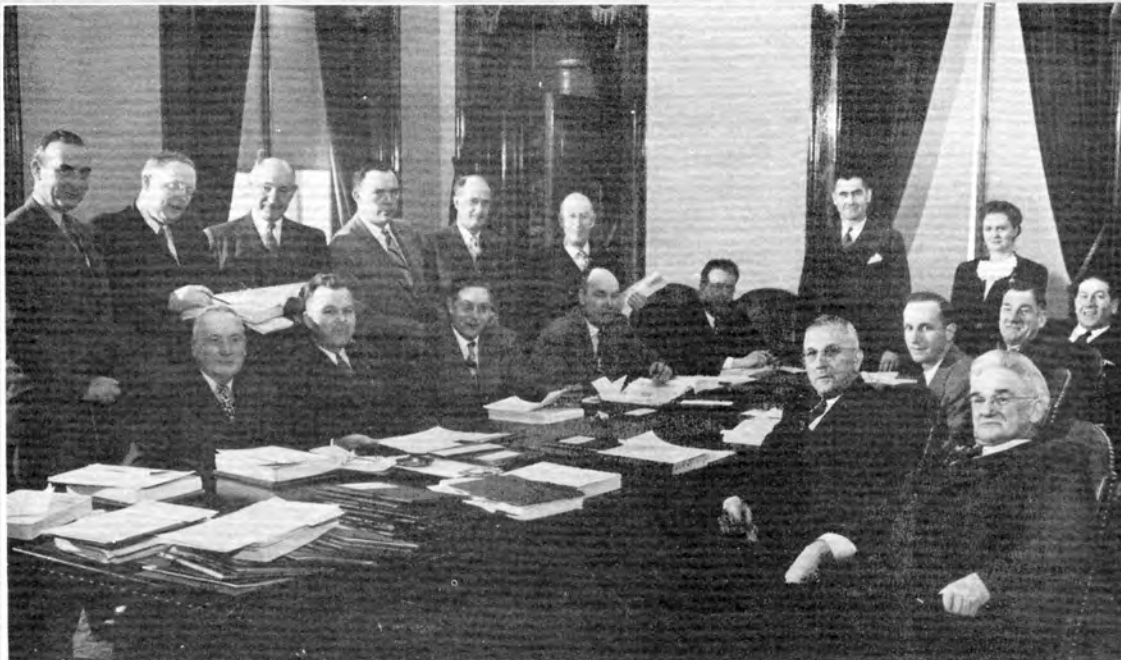


HOUSE COMMITTEE ON RULES



SEATED (READING CLOCKWISE AROUND THE TABLE) KINNEAR, SCHUMANN, CLARK (APPOINTED SENATOR), EMMA ABBOTT RIDGWAY, WEDEKIND, RASMUSSEN, FORD, BEIERLEIN, ADAMS, WINBERG. STANDING: SPEAKER CHARLES W. HODDE, RAUGUST, C. W. HOLCOMB-CHIEF CLERK AND BERNARD GALLAGHER. HAROLD ZENT, NAMED TO REPLACE ASA CLARK WAS NOT PRESENT.

HOUSE COMMITTEE ON APPROPRIATIONS



SEATED (READING CLOCKWISE AROUND THE TABLE) JEFFREYS, NEILL, SMILEY, ALLEN, O'BRIEN, SIMMONS, VANE, MARDÉSICH, SCHUMANN, HENDERSON. STANDING: MICHAEL GALLAGHER, BARGREEN, HOEFEL, FRAYN, SHANNON, THOMPSON, RILEY-CHAIRMAN, VIOLET BOEDE. ABSENT: BERNARD GALLAGHER, KINNEAR AND WATSON.





HOUSE COMMITTEE ON REVENUE AND TAXATION



SEATED (READING CLOCKWISE) FARRINGTON, RODERICK, RHODES, WYATT, COUGHLIN, OLE OLSON-CHAIRMAN, CALLOW, CARROLL, ELDRIDGE, COMFORT, SPRAGUE AND SHADBOLT. STANDING: LOUISE LANDGRAF-COMMITTEE SECRETARY, ANDERSON, POWELL, BLAIR, HALLAUER, PAULSEN, FORD, HOFMEISTER AND ANDY HESS-COMMITTEE CLERK. ABSENT: CARTY, JOHN R. JONES, VERNON A. SMITH.

HOUSE COMMITTEE ON ROADS AND BRIDGES



SEATED (READING CLOCKWISE FROM THE FRONT) MCPHERSON, HENRY BROWN, JOHN R. JONES, HILLYER, STONECIPHER, PEDERSEN, JULIA BUTLER HANSEN-CHAIRMAN, BASSETT, EVA ANDERSON, WILSON, C.C.MILLER, CARMICHAEL, ROSENBERG, GORDON, WASHINGTON. STANDING: DONOHUE, KNOBLAUCH, GORDON BROWN, DILLARD, DOROTHY BOLLINGER-COMMITTEE SECRETARY, MAX OLDFIELD-COMMITTEE CLERK. ABSENT: BEIERLEIN, ADAMS, CORY, HOOPINGARNER, RAUGUST, RIDGWAY, RALPH SMITH, JEANETTE TESTU, WEDEKIND, WENBERG.





HOUSE PAGES



FRONT ROW--CORY OLSEN, GEORGE NICHOLS, SAM FARRINGTON, BARBARA SCACCO, DICK BELL, THOMAS JEFFERSON, JOHN YOST, BOB ALDRIDGE. SECOND ROW--VIC SKINNER-SERGEANT AT ARMS, STERLING MUNRO, BOB FORD, NORMAN TEACHMAN, HOWARD FINCH, KEITH ROYS-HEAD PAGE, MEL SCHELL, JOHN SCHAUGHNESSY, JIM SJOLUND, RONALD SIMMONS, ED OLSON-ASSISTANT SERGEANT AT ARMS.

SENATE PAGES



FRONT ROW--TOMMY MILLER, JACKIE WATSON, ROBERTA FRENCH, JIMMIE NICKLE, PATRICK BRADY, BILLY DOBLER. SECOND ROW--JOAN PARKER, TOMMY FRETHEIM, PHYLLIS SLOAN, PATTY JO HILL, NORMAN ROBERTS. BACK ROW--GENE JOHNSTON (ELEVATOR), BRUCE MILLER (ELEVATOR) CHARLOTTE HIGGINS, TOM PARKER-HEAD PAGE, CLIVE CHANDLER (ELEVATOR), BOB GIOVINE. ABSENT--JIM PETERS AND JIM ROGERS.





THE WORKING PRESS



HARD AT WORK SENDING OUT NEWS OF THE LEGISLATIVE SESSIONS TO THE STATE OF WASHINGTON WERE THREE MEMBERS OF THE UNITED PRESS STAFF STATIONED IN THE PRESS ROOMS ON THE FOURTH FLOOR OF THE LEGISLATIVE BUILDING. PICTURED ABOVE LEFT TO RIGHT, ARE RALPH HOLMSTEAD, U.P.'S PRESENT OLYMPIA BUREAU CHIEF; MARTIN HEERWALD, WHO WILL SUCCEED HOLMSTEAD AT THE CLOSE OF THE SESSION, AND HENRY MINARD OF UNITED PRESS. HOLMSTEAD AND HEERWALD DISCUSS A STORY 'ANGLE' WHILE MINARD GETS READY TO SEND COPY OVER THE WIRE.



THE PICTURE ABOVE IS ONE OF THE RAREST IN THIS EDITION AS IT IS SELDOM THAT PRACTICALLY ALL MEMBERS OF THE PRESS WHO ATTEND THE LEGISLATIVE SESSIONS IN OLYMPIA CAN BE FOUND TOGETHER AT ONE TIME. PICTURED LEFT TO RIGHT, ARE FRANK VAILLE, CHARLES GEER AND LEROY HITTLE OF THE ASSOCIATED PRESS; W. NEWLAND 'DOC' REILLY, SPOKANE CHRONICLE; CARL DOWNING, RADIO NEWS BUREAU; STUB NELSON, SEATTLE P. I.; ASHLEY HOLDEN, SPOKANE SPOKESMAN REVIEW; ED. GUTHMAN, SEATTLE TIMES; ELMER VOGEL, ASSOCIATED PRESS. MISSING WERE ROSS CUNNINGHAM, SEATTLE TIMES AND ED DAKIN, ASSOCIATED PRESS.

