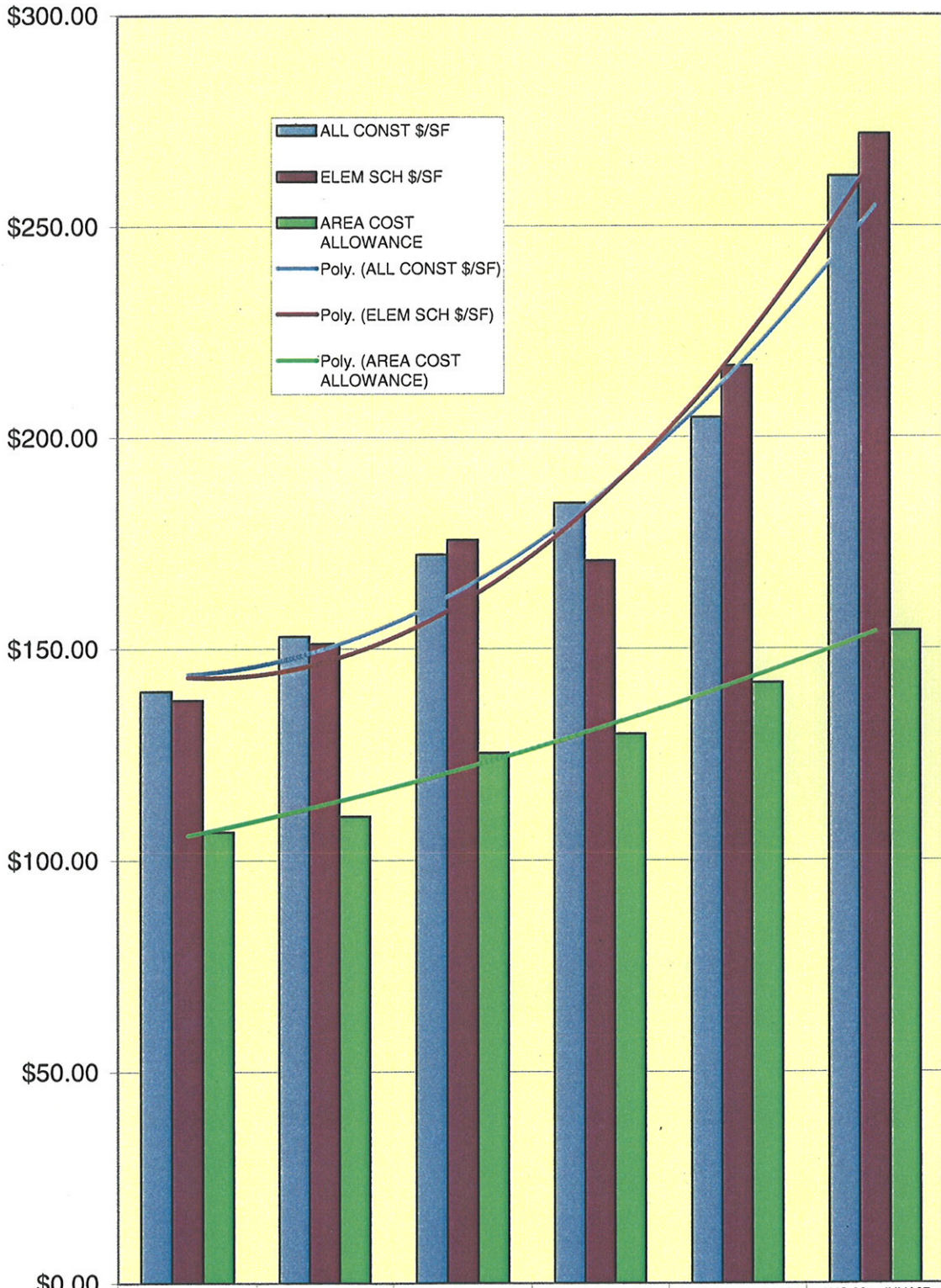
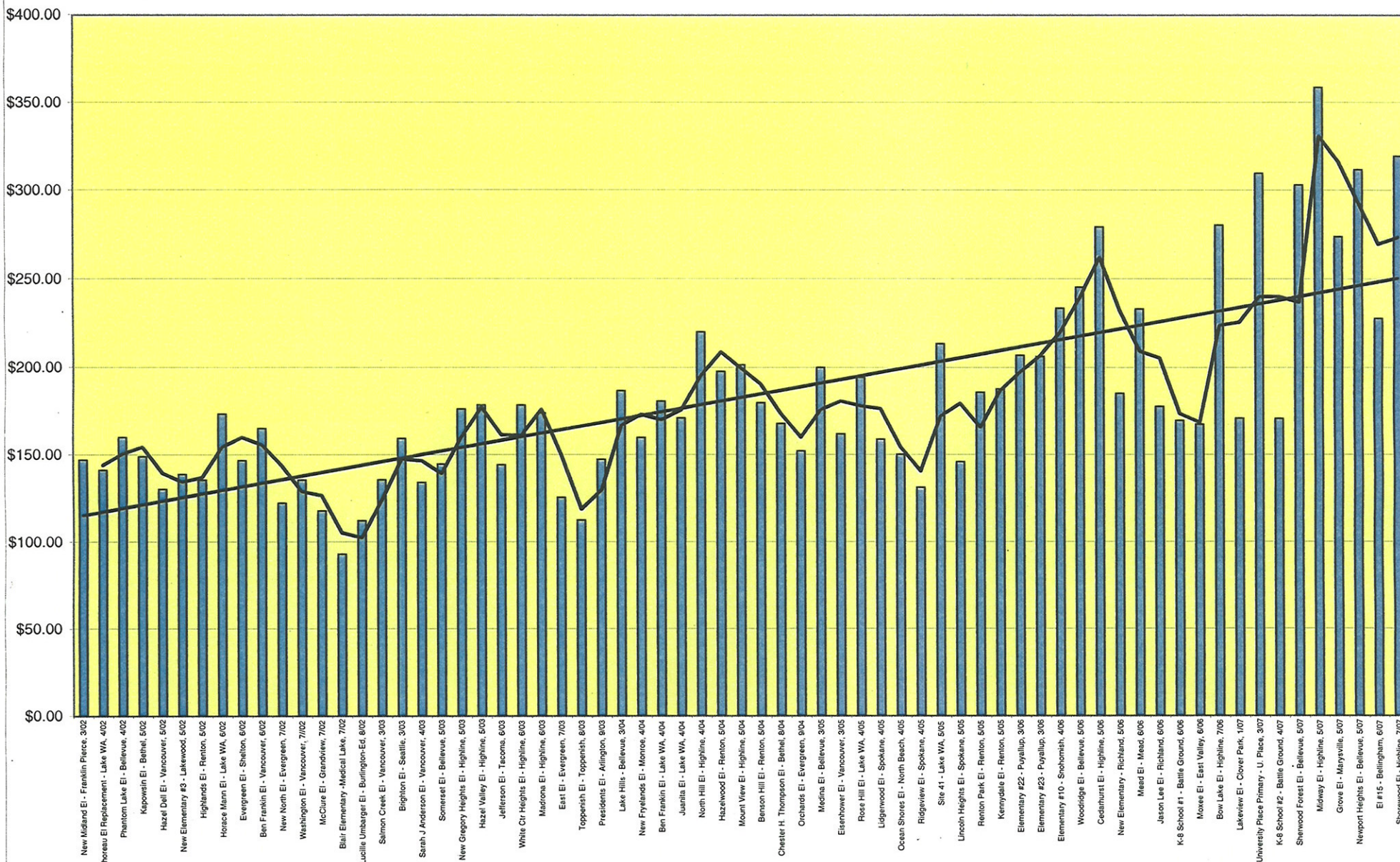


**AREA COST ALLOWANCE vs
SCHOOL CONSTRUCTION COSTS
2002 TO 2007**



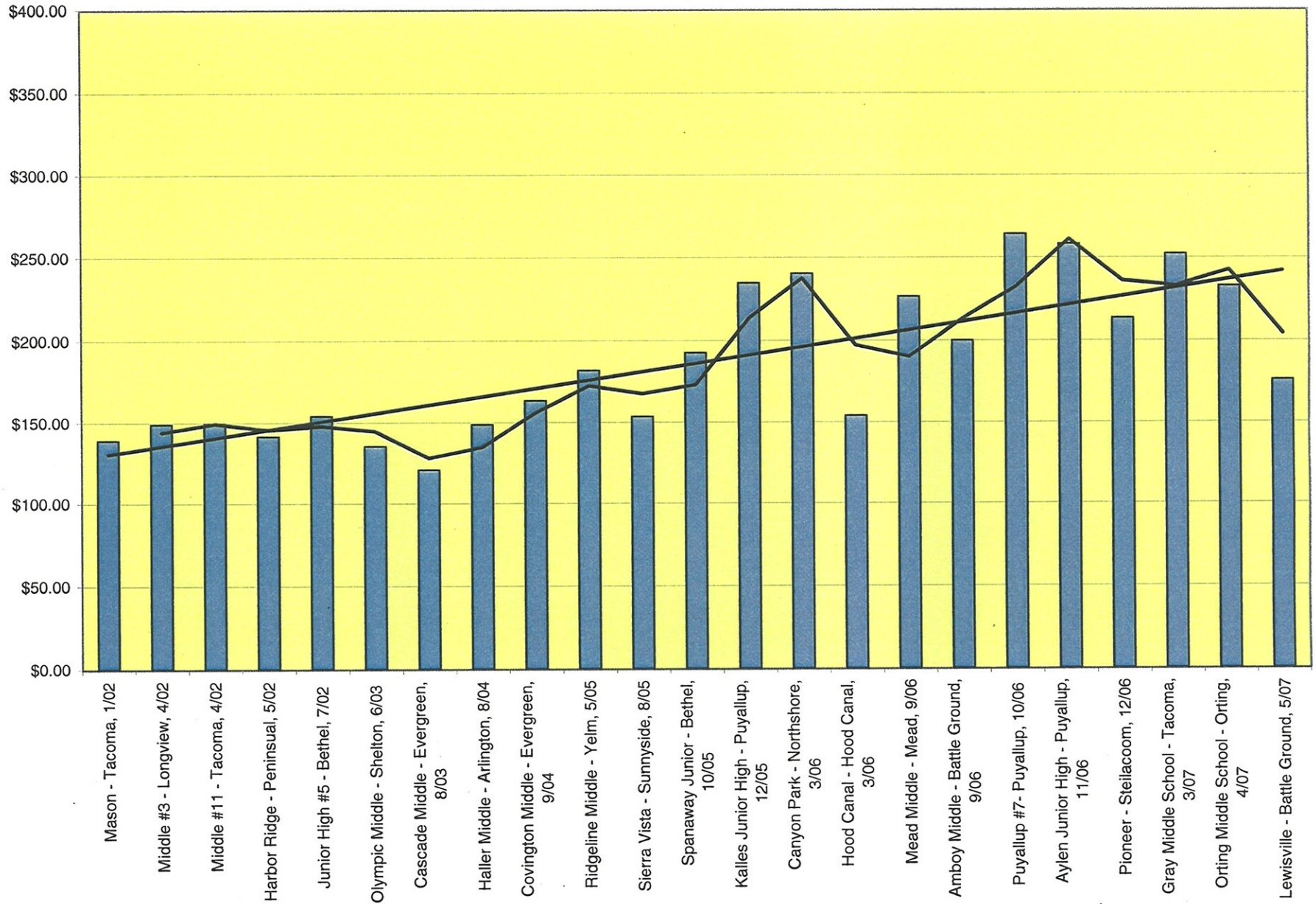
	AUG 01 -- JULY 02	AUG 02 -- JULY 03	AUG 03 -- JULY 04	AUG 04 -- JULY 05	AUG 05 -- JULY 06	AUG 06 -- JULY 07
■ ALL CONST \$/SF	\$139.98	\$152.92	\$172.27	\$184.41	\$204.69	\$261.83
■ ELEM SCH \$/SF	\$137.84	\$151.21	\$175.74	\$170.79	\$216.83	\$271.79
■ AREA COST ALLOWANCE	\$106.72	\$110.32	\$125.32	\$129.81	\$141.95	\$154.22

NEW ELEMENTARY SCHOOLS 2002 TO 2007



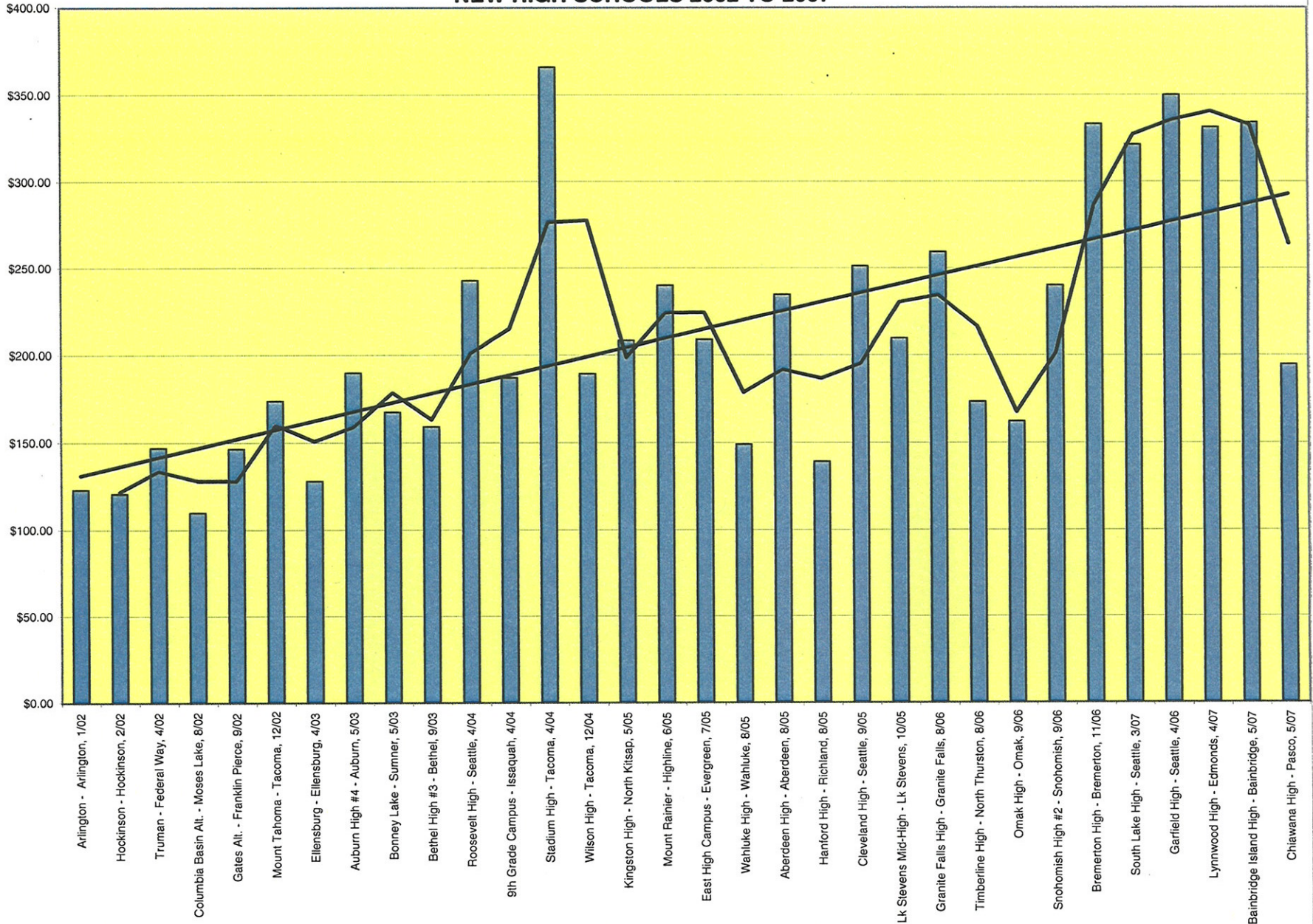
Moving trend line and linear line

NEW JUNIOR/MIDDLE SCHOOLS 2002 TO 2007



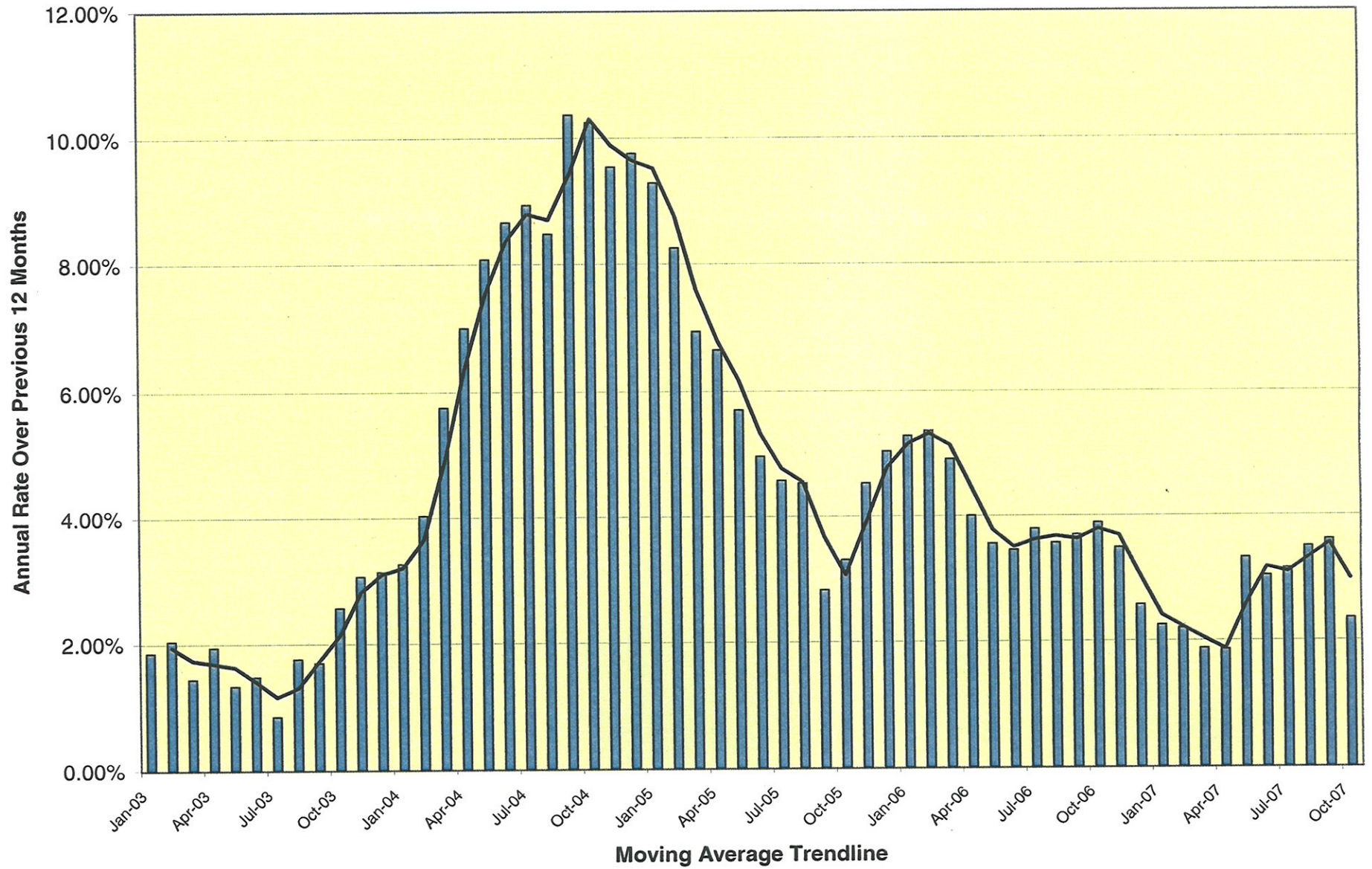
Moving trend line and linear line

NEW HIGH SCHOOLS 2002 TO 2007

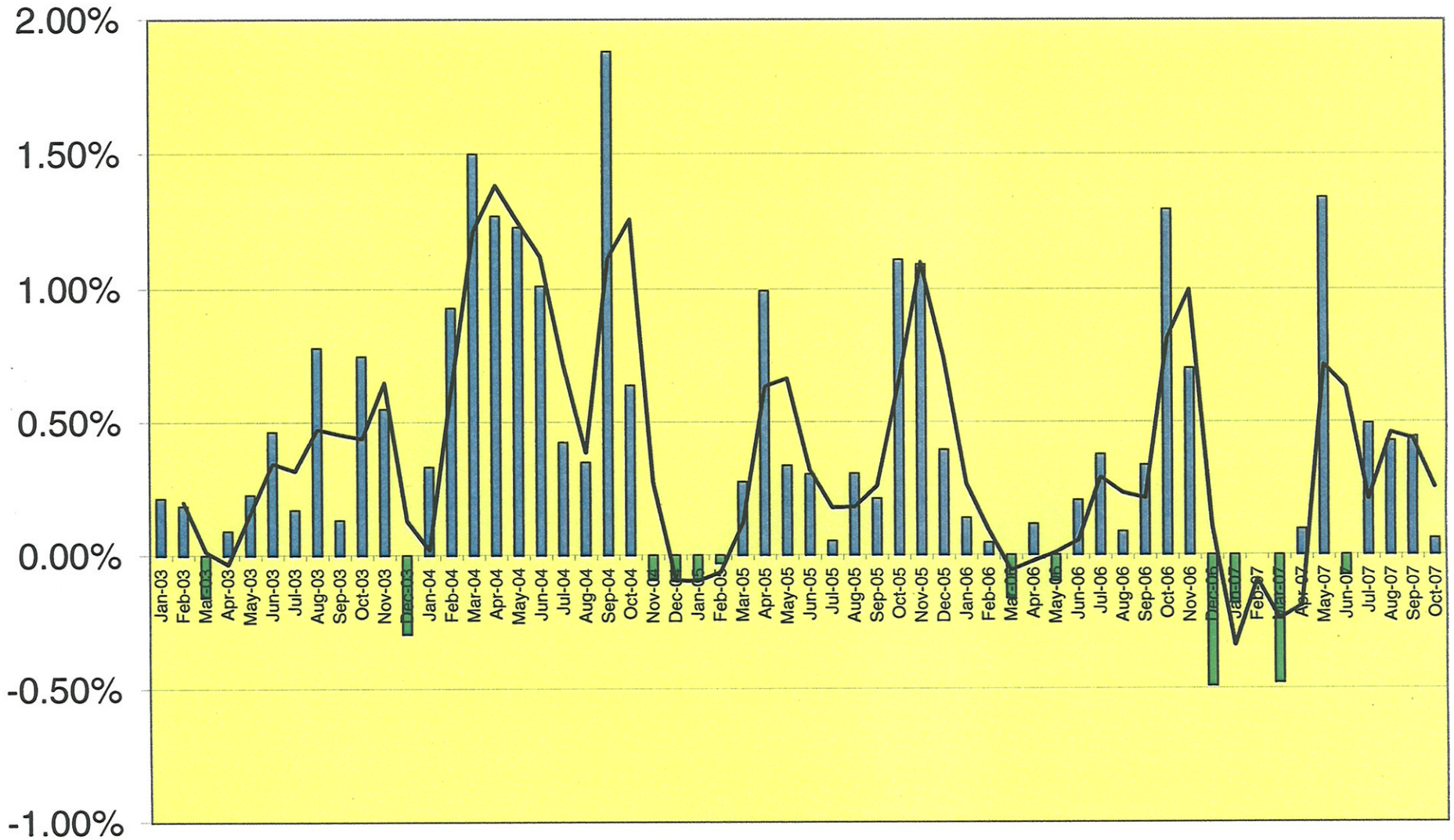


Moving trend line and linear line

Per Annum Inflation ENR Index for Building Construction



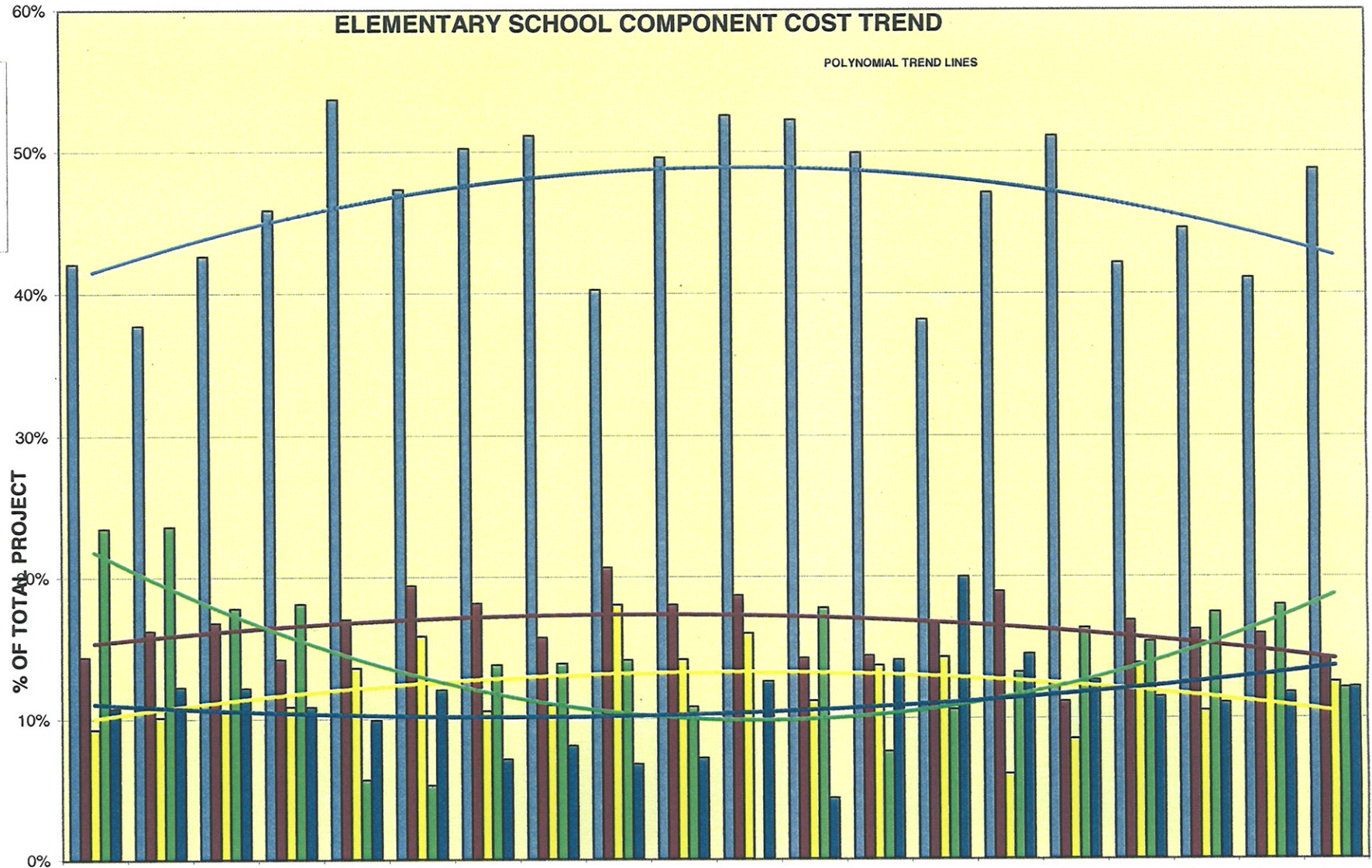
ENR Monthly Building Inflation Cost Index



ELEMENTARY SCHOOL COMPONENT COST TREND

POLYNOMIAL TREND LINES

- BUILDING
- MECH
- ELECT
- SITEWORK
- GEN COND



403 - GREGORY HEIGHTS 403 - HAZEL VALLEY 403 - WHITE CENTER 1203 - MADRONA 904 - LIDGERWOOD ES VA 205 - LIDGERWOOD ES CR 305 - MEDINA ES 805 - EISENHOWER ES 406 - HOOD CANAL K-8 606 - NEW RICHLAND 806 - NEWPORT HEIGHTS 806 - MEAD ELEMENTARY 806 - JASON LEE ES 1106 - WOODLAND ELEM 107 - BATTLEGD 2nd K-8 507 - 4 SEASONS ELEM 507 - SHERWOOD FOREST ES 607 - ROBERT FROST 807 - MARYSVILLE #25 - GROVE 907 - CLUSTER ELEM

Escalation Models by Year - 2002 - 2007

