

Joint Legislative and Executive Task Force
on Mental Health Services and Financing

June 21, 2005

Partnerships for Recovery

Transforming the Mental Health System in Washington State

Cheri Dolezal, RN, MBA
DSHS-Mental Health Division Liaison
to the Mental Health Task Force

Partnerships for Recovery: Transforming the Mental Health System of Washington State

- SAMHSA and the Center for Mental Health Services will award Mental Health Transformation State Incentive Grants to 6 – 13 states
- \$1.5 to \$3 million/yr available to states for up to 5 years
- Office of Governor and DSHS-Mental Health Division submitted application for State of Washington
- Opportunity to apply comes following the work of the Mental Health Task Force and passage of E2SHB 1290 and E2SSB 5763
- Would lead to a Comprehensive State Mental Health Plan
- Awards will be announced October 1, 2005

2

Steps toward Transformation

Continuous Small Steps
A focus on core missions, improving what the system is already doing.

A Series of Many Exploratory Medium Jumps
Pushing the boundaries of core competencies, trying to create something new within the existing paradigm.

A Few Big Jumps
New rule sets that leverage new ideas.

3

Goals of a Transformed System

- Goal 1** Americans understand that mental health is essential to overall health.
- Goal 2** Mental health care is consumer and family driven.
- Goal 3** Disparities in mental health services are eliminated.
- Goal 4** Early mental health screening, assessment, and referral to services are common practice.
- Goal 5** Excellent mental health care is delivered and research is accelerated.
- Goal 6** Technology is used to access mental health care and information.

4

Key Elements of the Proposal

Commission Goal 1: Americans understand that Mental Health is Essential to Overall Health

- **Community and Family Social Marketing Initiative**

- **Business and Employer Social Marketing Initiative**

5

Key Elements of the Proposal

Commission Goal 2: Mental Healthcare is Consumer and Family Driven

- **Develop and strengthen a statewide consumer and family infrastructure.**
- **Implementation of strength-based, consumer driven, individualized care such as Wellness Recovery Action Plans (WRAP)**
- **A workforce development strategy that promotes utilization of peer-professionals in direct service, management, and supervisory roles**
- **Involvement of consumers and family members in policy, evaluation, and quality assurance mechanisms on the state and local levels**

6

Key Elements of the Proposal

Commission Goal 3: Disparities in Mental Health Services are eliminated

- **Reducing Ethnic Disparities**

- **Reducing Rural-Urban Disparities**

7

Key Elements of the Proposal

Commission Goal 4: Early Mental Health Screening, Assessment and Referral to Services are Common Practice

- **Preschool age populations**
- **School age populations**
- **Transition age populations**
- **All ages**

8

Key Elements of the Proposal

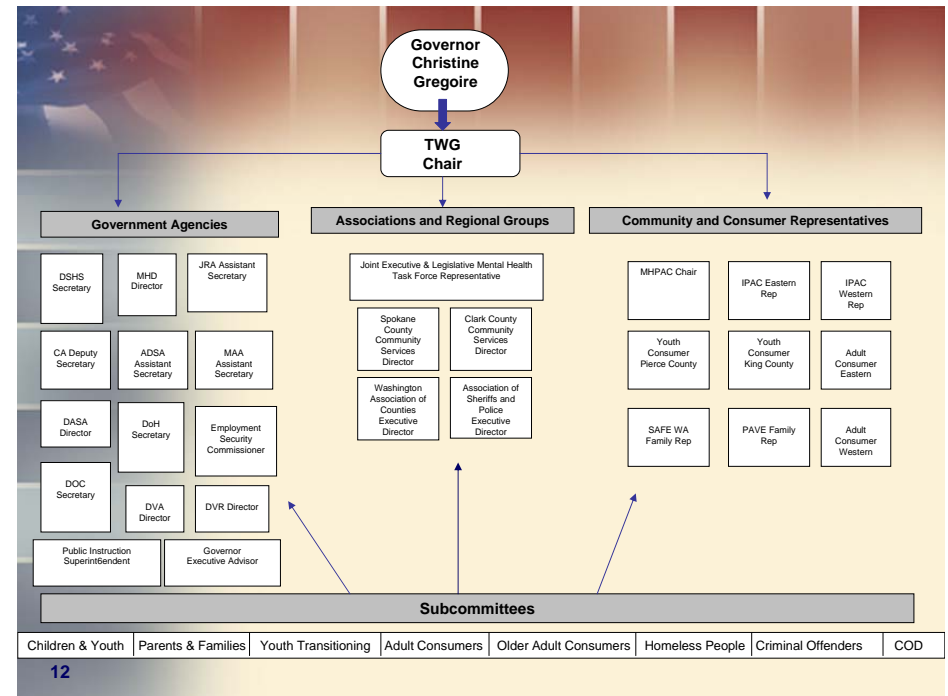
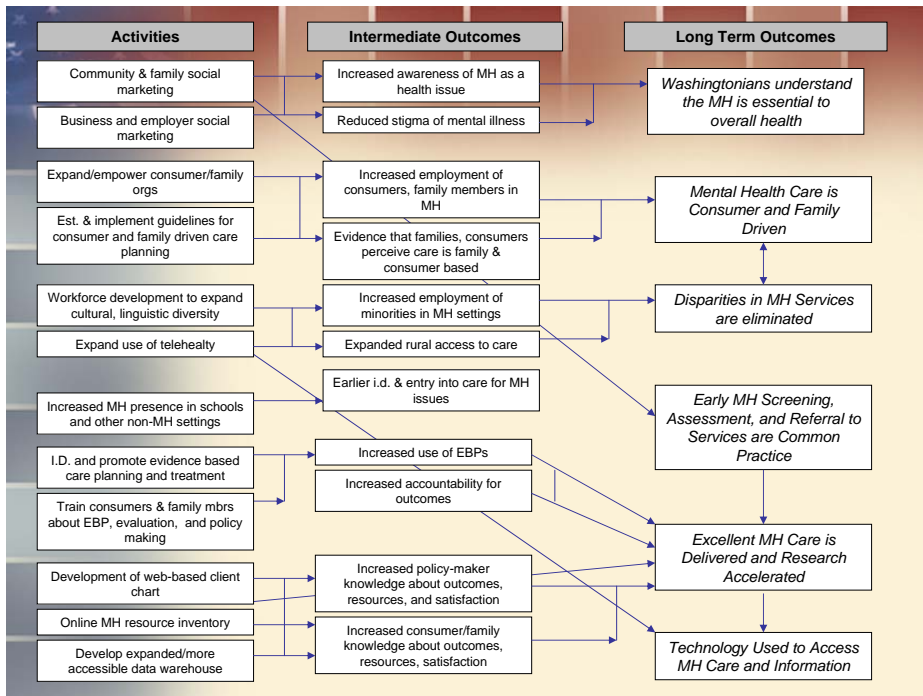
Commission Goal 5: Excellent Mental Health Care is Delivered and Research is Accelerated

- Advance the use of EBPs through the use of incentives and training.
- Policies will be developed for individuals and their families with mental illnesses to use a variety of treatments and supports effectively within a single program.
- Develop guidelines that reflect what is learned about the most effective programs for children, adults and older adults and how new knowledge can be integrated into service design.

Key Elements of the Proposal

Commission Goal 6: Technology is Used to Access Mental Health Care and Information

- Increase rural/underserved areas' access to mental health services via telehealth
- Develop a statewide-integrated web-based electronic medical record
- Improve existing statewide consumer satisfaction survey process
- Create a web-based outcome reporting system
- Enhance Geographic Information System (mapping)



Letters of Commitment Letters of Support

(Other TWG Appointees)

- IPAC/AIHC
- DOH
- Clark County Community Services Rep
- Spokane County Community Services Rep
- MHPAC Reps
- Youth Consumer (rural)
- Youth Consumer (urban)
- Adult Consumer (Eastern WA)
- Adult Consumer (Western WA)
- PAVE WA
- SAFE WA
- WA State Assoc. of Counties
- Provider Council
- WASPC
- Common Ground
- State and National Consultants
- Judges Association
- Gates Foundation-Sound Families
- Experts from universities in WA, OR, and NC
- NAMI
- National Mental Health Association
- WA Clubhouses Association
- State Hospital Consumer Liaisons and CEOs
- Affordable Housing and other advocates

**PDF of the Partnerships for Recovery proposal
as submitted to SAMHSA can be found on the
MHD website at:**

**[http://www1.dshs.wa.gov/Mental
health/mhtsig.shtml](http://www1.dshs.wa.gov/Mentalhealth/mhtsig.shtml)**

